



**Citizens Bond Oversight Committee
Quarterly Meeting
October 29, 2019
5:00 pm, Jones Fine Arts & Dual Language Academy**

WELCOME (5:00 – 5:05).....Will Deakyne
CBOC Chairperson

TOUR OF JONES FINE ARTS & DUAL LANGUAGE ACADEMY (5:05 – 5:45)
Kelly Horn, Executive Director of Plant Services
Katuska Herrador, Principal

BOND PROGRAM PROGRESS REPORTS (5:45 – 6:20)
Cindy Powell, Chief Financial Officer
Dr. Michael Hill, Assistant Superintendent of Administration
Kelly Horn, Executive Director of Plant Services
Dr. Christopher Anderson, Director of Fine Arts
Tim Collins, Director of Transportation

GUNN JR. HIGH FINE ARTS & DUAL LANGUAGE ACADEMY (6:20 – 6:45).....Cindy Powell
Dr. Christopher Anderson

OTHER BUSINESS (6:45 – 7:00).....Will Deakyne

Future CBOC Meeting Dates:

January 28, 2020

April 21, 2020



2014 Bond Program Update

October 29, 2019

Bond 2014 Package Areas

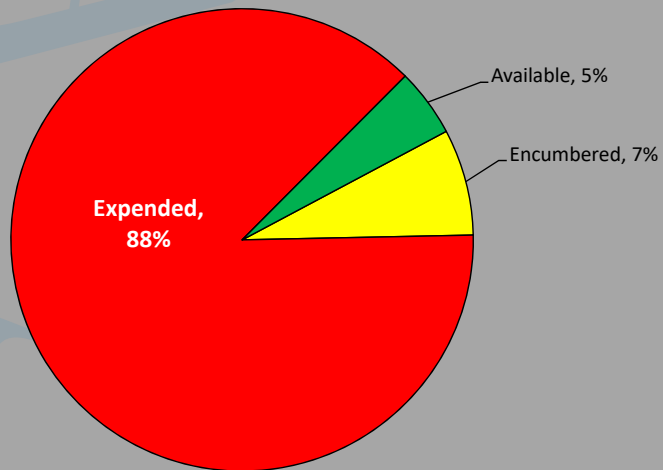
Facilities	\$552,388,327
Fine Arts	\$9,828,738
Safety, Security and Technology	\$82,633,000
Transportation	<u>\$18,279,213</u>
Total	\$663,129,278

Bond Program Financial Summary (Phases I - V)

	Budget	Encumbered	Expended	Available
Facilities	\$552,388,327	\$49,353,334	\$495,484,114	\$7,550,879
Fine Arts	\$9,828,738	\$237,495	\$8,280,997	\$1,310,246
Safety, Security & Technology	\$82,633,000	\$323,498	\$73,095,605	\$9,213,897
Transportation	<u>\$18,279,213</u>	<u>\$810,710</u>	<u>\$16,579,349</u>	<u>\$889,154</u>
Totals	\$663,129,278	\$50,725,038	\$593,440,064	\$18,964,176
Bond Issuance Costs				(\$4,814,320)
Interest, Additional Proceeds & Other Income				<u>\$18,237,895</u>
Total Available Funds				\$32,387,750

Note: Totals may not add due to rounding.

Bond Program Financial Summary (Phases I – V)



2014 Bond Program Update



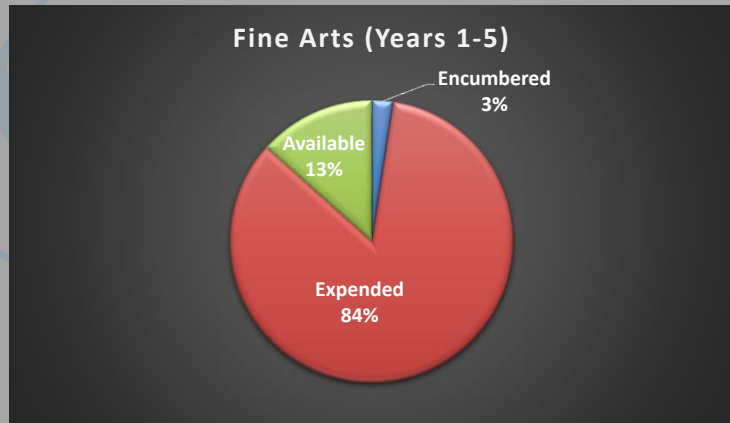
Fine Arts



Fine Arts Budgets

Year 1	Year 2	Year 3	Year 4	Year 5	Total
\$1,863,723	\$1,823,520	\$1,938,363	\$2,117,949	\$2,085,183	\$9,828,738

Expended to Date: \$8,280,997
 Encumbered: \$ 237,495
 Available: \$1,310,246





Fine Arts

YEAR FIVE FINE ARTS CAPITAL PURCHASES

- Instrument and equipment purchases

CURRENT PRIORITIES

- Instructional planning and professional development to prepare for 5th grade cohort at the Corey and Jones Academies of Fine Arts & Dual Language
- Year 5 instrument and equipment orders
- Construction of Fine Arts Center
- Planning for courses that will be offered at the Fine Arts Center and operations of the Fine Arts Center
- Programming and schematic design for Jr. High Fine Arts / Dual Language Academy at Gunn Jr. High (planning for next bond program)

2014 Bond Program Update

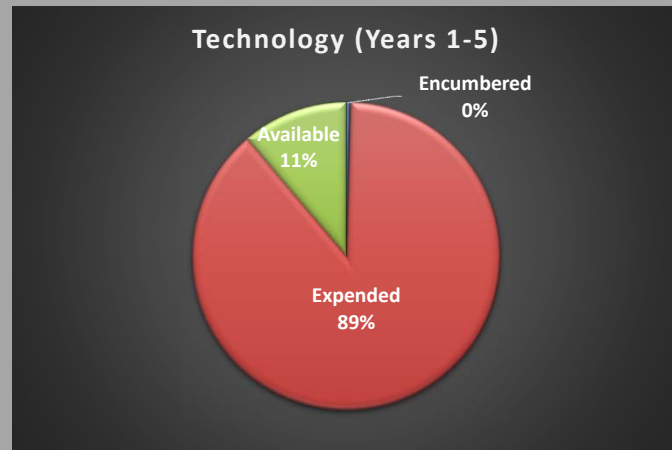


Safety, Security and Technology

Safety, Security & Technology Budgets

Year 1	Year 2	Year 3	Year 4	Year 5	Total
\$19,974,848	\$14,737,583	\$14,328,511	\$14,438,295	\$19,153,763	\$82,633,000

Expended to Date:	\$73,095,605
Encumbered:	\$ 323,498
Available:	\$ 9,213,897



Security/Technology

INFRASTRUCTURE / PHYSICAL SECURITY



- The following projects planned for the 2014 Bond Program are complete
 - Security camera upgrades & expansions
 - PA system upgrades
 - IP phone upgrades
 - Non-Instructional network upgrades
 - Data Center/ Server Administration
- Upcoming Project:
 - Final phase of Network and Wireless upgrades at 40 campuses using a combination of bond and e-rate funds



Security/Technology

DESKTOP / CLIENT DEVICES

- Refreshing and adding staff and student devices to adhere to district standard
- Evaluating Virtual Desktops solutions at three Junior High campuses in focused curriculum areas.



Security/Technology

Other Technology Bond Projects (Network Printing Solution)



- Network printing and copy solution for Instructional and Non-Instructional Facilities (NIF) is in its final stage
- Upcoming Schools & NIFs: South Davis Elem, Remyse Elem, Starrett Elem, Kookan Elem, Butler Elem, Ditto Elem, and Annex III

2014 Bond Program Update



Transportation

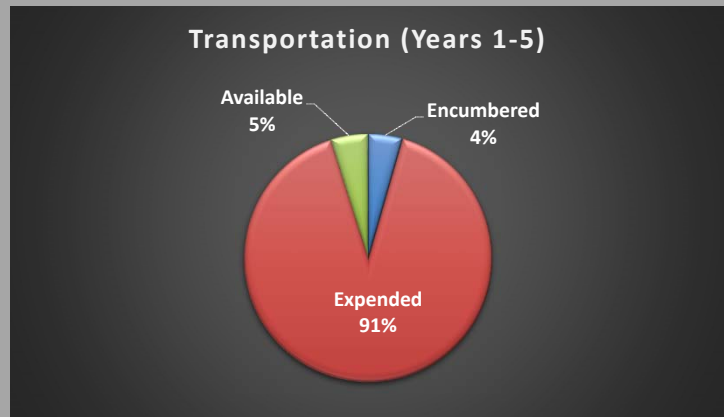
ArlingtonISD
BOND 2014



Transportation

Year 1	Year 2	Year 3	Year 4	Year 5	Total
\$5,276,016	\$3,645,413	\$3,056,034	\$3,288,899	\$3,012,851	\$18,279,213

Expended to Date:	\$16,579,349
Encumbered:	\$ 810,710
Available:	\$ 889,154





Transportation

SCHOOL BUSES

- All planned bus purchases are complete & all buses have been received
- Total purchased/received: 114
- VW Grant Award: \$218,709
 - Offsets a portion of the cost of 6 buses



Transportation

WHITE FLEET



- 125 vehicles purchased & received
 - 105 replacements
 - 20 additional vehicles
- Year 5 purchases:
 - 25 replacements ordered
 - 23 received to date



Transportation

OTHER VEHICLES



- Additional vehicles purchased through bond savings:
 - 3 Suburbans (all 3 received)
 - 7 Shuttle buses (delivery expected by October 31, 2019)

2014 Bond Program Update



Facilities

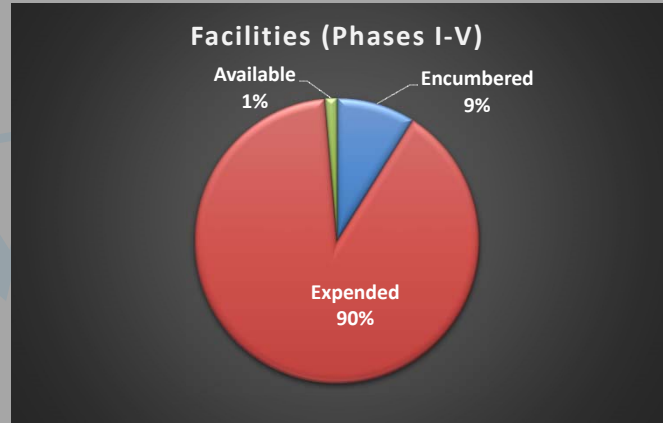




Facilities

Year 1	Year 2	Year 3	Year 4	Year 5	Total
\$149,205,413	\$213,048,484	\$106,715,092	\$71,748,857	\$11,670,481	\$552,388,327

Expended to Date: \$495,484,114
 Encumbered: \$ 49,353,334
 Available: \$ 7,550,879



Active Projects– by Phase

(Bond Phases I – V)

Phase	Number Of Projects
Design	0
Bid	1
Construction	17
Closeout	20
Total Projects	38



Facilities

PHASE I PROJECTS

Closeout	Closed		
Dipert CTC	Arlington HS MAC	Boles JHS Special Ed	McNutt ES
Peach ES	Bowie HS MAC	Corey Academy	Mac Bernd PDC
	Lamar HS MAC	Ferguson Education Center	Ousley JHS Building/Track
	Martin HS MAC	Hutcheson JHS Demolition	Workman JHS Cafeteria (2)
	Sam Houston HS MAC	Jones Academy	
	Seguin HS MAC	Lamar baseball field bleachers and lighting	



Facilities

PHASE II PROJECTS

Construction	Closeout	Closed			
Wood ES	Little ES	Ag Sci Center	Crouch ES	Knox ES	Thornton ES
	Martin HS	Anderson ES*	Crow ES*	Kooken EC*	West ES*
	Miller ES	Arlington HS	Ditto ES*	Larson ES*	Williams ES
	Nichols JHS	Ashworth ES*	Duff ES	Moore ES	
	Sam Houston HS	Bebensee ES	Ellis ES	Morton ES	
	Sherrod ES	Beckham ES*	Farrell ES	Pearcy ES*	
	Turning Point SS	Blanton ES*	Fitzgerald ES	Remyse ES*	
		Bryant ES*	Foster ES	So. Davis ES	
		Burgin ES*	Hale ES*	Starrett ES	

*STEM labs, strings room, security vestibule



Facilities – library addition



Wood Elementary



Facilities

PHASE III PROJECTS

Construction	Closeout	Closed		
Fine Arts Center	Butler ES Seguin HS	Amos ES Atherton ES Berry ES Dunn ES Goodman ES(2) Gunn JHS Hill ES Johns ES(3)	Key ES Jr. High Tracks (9) Lamar HS Culinary Pope ES Rankin ES Roark ES Short ES Speer ES	Swift ES Webb ES Wimbish ES



Facilities – new construction



Facilities

PHASE IV PROJECTS

Construction	Closeout	Closed
Athletics Complex	Arlington College & Career High School	Ashworth ES
Bailey JHS	Bowie HS	Larson ES
Blanton ES		
Boles JHS		
Carter JHS		
Crow ES		
Kooken EC		
Lamar HS		



Facilities – *new construction*



AISD Athletics Complex - Natatorium



Facilities – *new construction*



AISD Athletics Complex - Arena



Facilities – renovations



Bowie High School



Facilities

PHASE V PROJECTS

Bid	Construction	Closeout	Closed
Counts Admin. Bldg.	Burgin ES Ditto ES Food Service Warehouse Hale ES Shackelford JHS Young JHS Transportation Ctr.	Barnett JHS Beckham ES Bryant ES Pearcy ES West ES Service Center 5618 W. Arkansas	Anderson ES Annexes I - IV Hilldale Center Remyse ES



Facilities – renovations



Ditto Elementary



Facilities – addition



Jones Academy of Fine Arts and Dual Language



HUB Participation

Project Description	Budget	Tier II HUB Participation Commitment %	Tier II HUB Participation Amount	Expenses To Date	Tier II HUB Participation Achieved % as of 10/24/19	Tier II HUB Participation Amount as of 10/24/19
TOTALS	\$ 579,986,321	23.43%	\$ 135,883,172	\$ 483,237,934	20.27%	\$ 97,937,249

Note: Totals above are excerpted from the 10/24/19 HUB report.

Contracts Approved Since August 27th CBOC Meeting

Project	General Contractor	Description	Amount	Over/(Under) Budget
Bailey Jr. High	RJM Contractors	Roof & window replacement	\$2,721,000	(\$79,000)
Wimbish World Language Academy	Hutcherson Construction	Canopy & landscape improvements	\$421,120	\$71,120
Jr. High Schools (8)	Hellas Construction	Field event infrastructure	\$1,173,752	(\$226,248)
Total				(\$234,128)



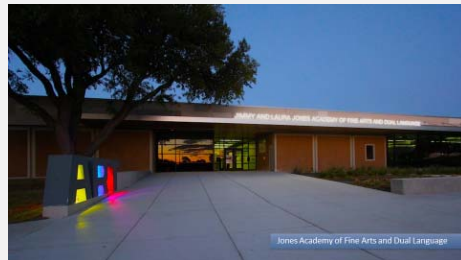
Fine Arts+Dual Language Academy Gunn Junior High School

August 22, 2019



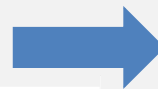
Fine Arts / Dual Language Academies

- Jones Academy: North
- Corey Academy: South
- Created through 2014 Bond
- Opened 2015-16
- Current cohorts: K-4th grade





Dual Language



Dual Language Programs

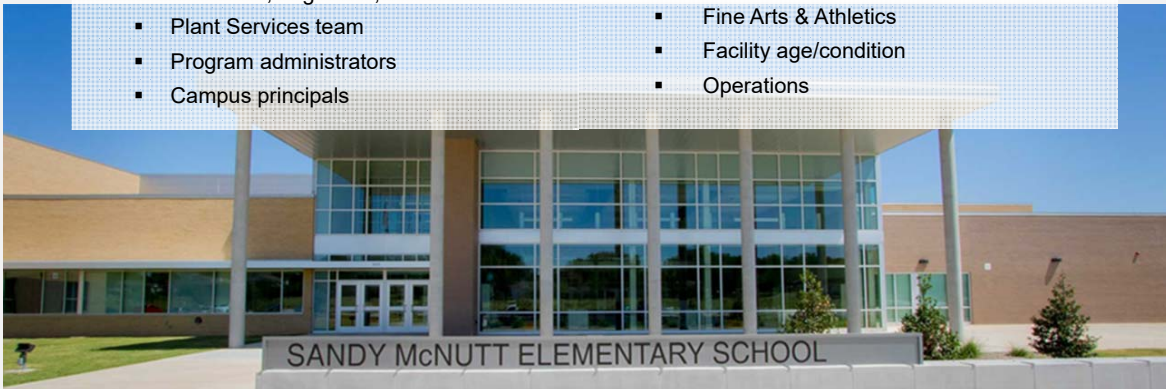
prepare students for a global workforce and productive community service.



CAPITAL NEEDS ASSESSMENT

METHODOLOGY

- Comprehensive assessment aligned to program priorities
- Consultants / Contributors
 - Architects, engineers, consultants
 - Plant Services team
 - Program administrators
 - Campus principals
- Prioritize and master plan identified needs for years 2020-2025
 - Capacity/utilization study
 - Enrollment projections
 - Instructional programming
 - Fine Arts & Athletics
 - Facility age/condition
 - Operations





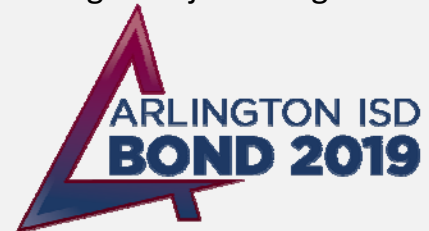
Assessment Findings

- **Programming**
 - Full-day prekindergarten
 - ***Jr. High & high school fine arts/dual language academies***
 - Career-tech
- **Educational adequacy**
 - Playgrounds
 - Kitchens and restrooms
 - Athletics and fine arts facilities
- **Access**
- **Facilities**
 - Aging facilities
 - Excess elementary capacity
 - Life cycle & condition needs
 - Operational efficiencies



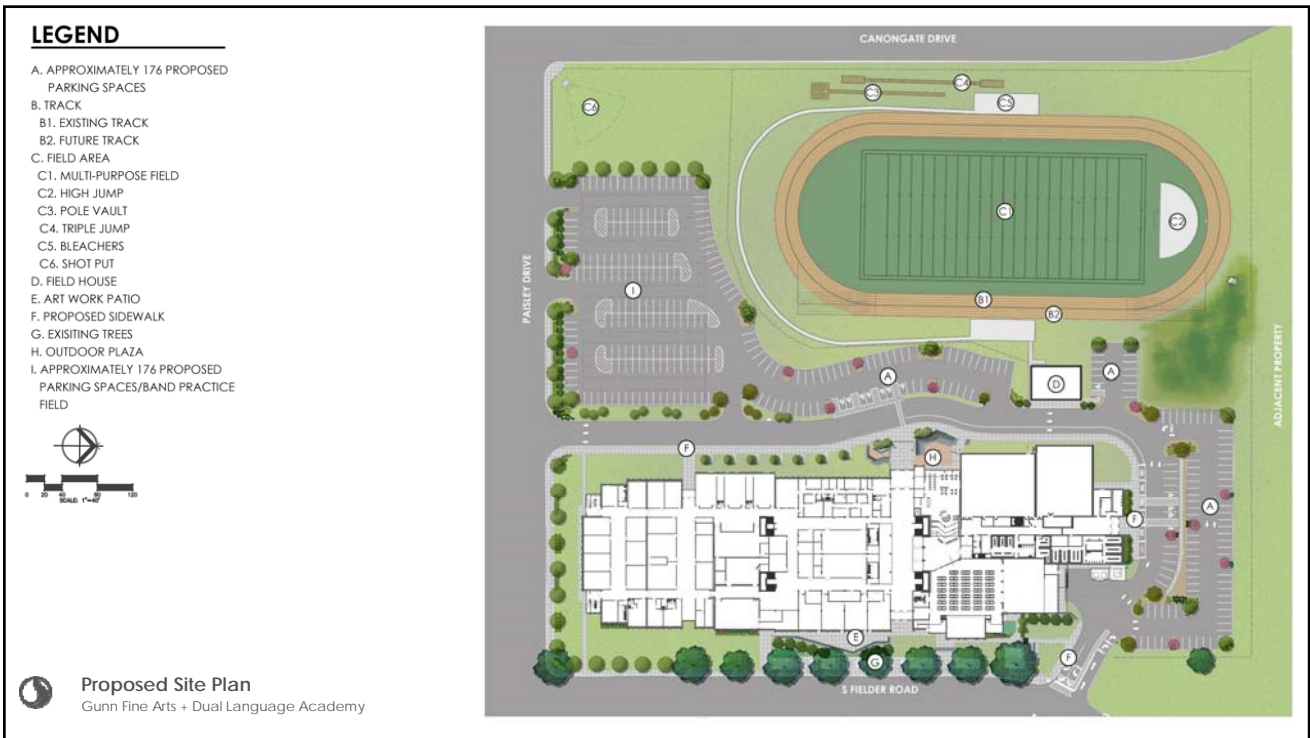
Secondary Fine Arts / Dual Language Academies

- Included in 2019 Bond Package
 - Junior High: Gunn Jr. High
 - High School: Arlington High
- Project includes renovations for condition and life cycle needs
- Stantec Architects has been engaged to design the junior high academy at Gunn
- Schematic design is complete







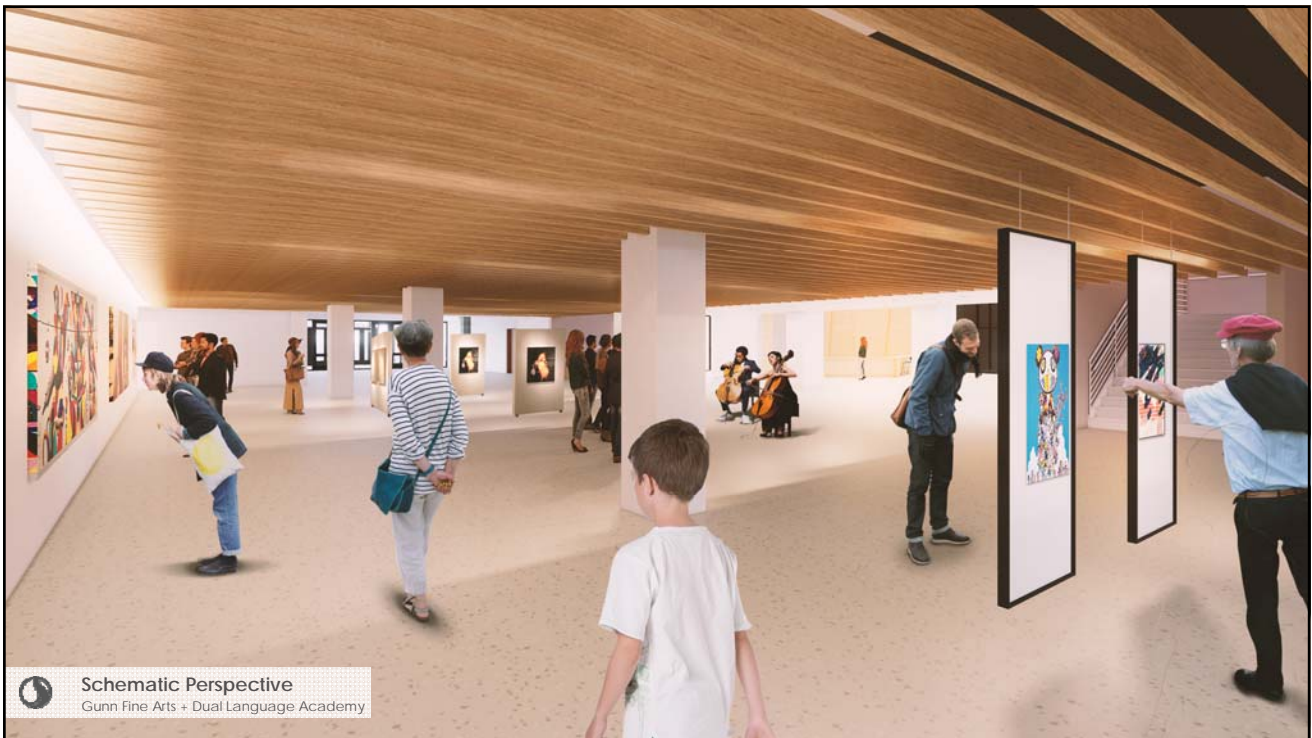
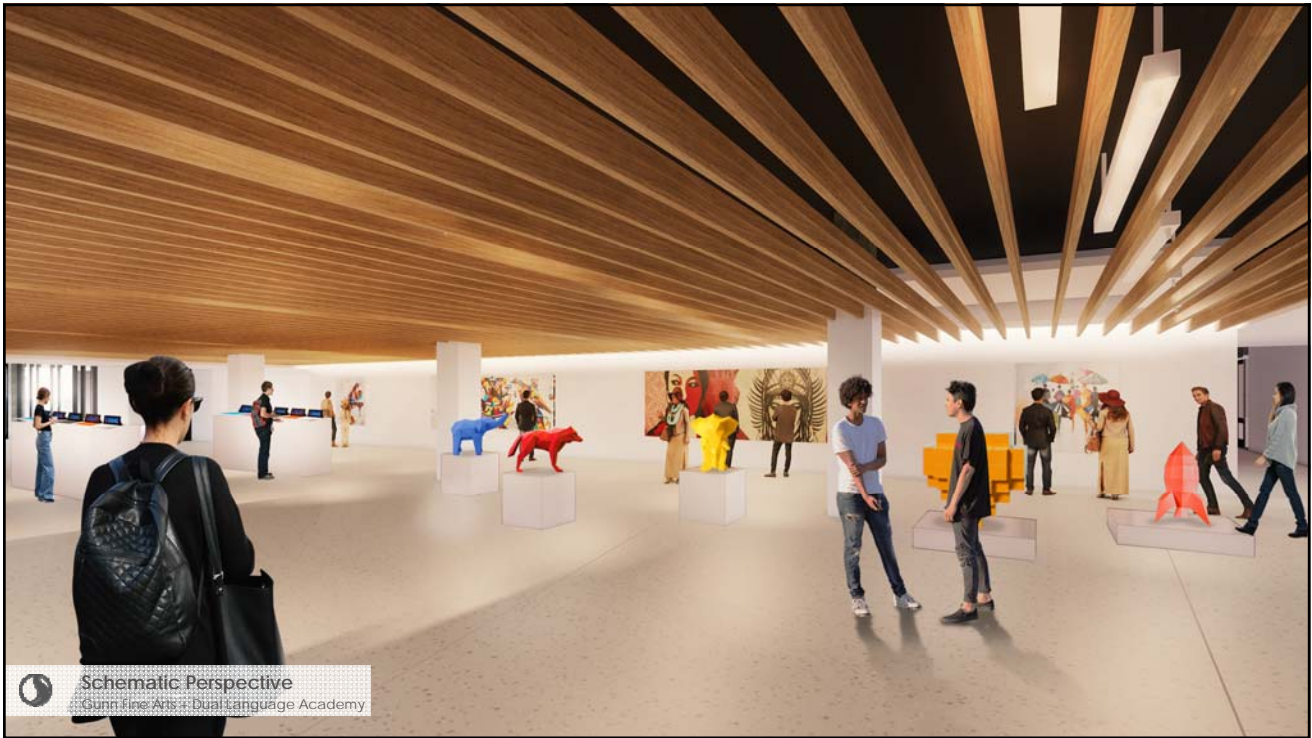


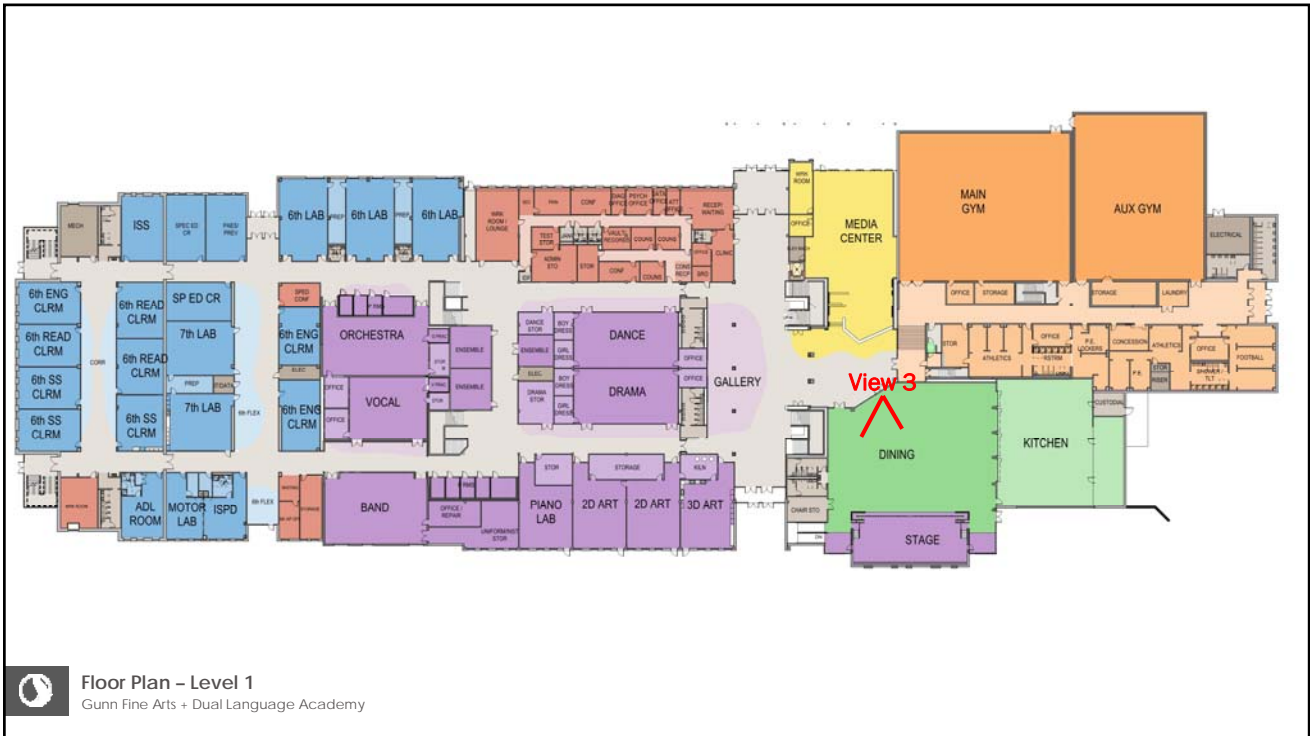








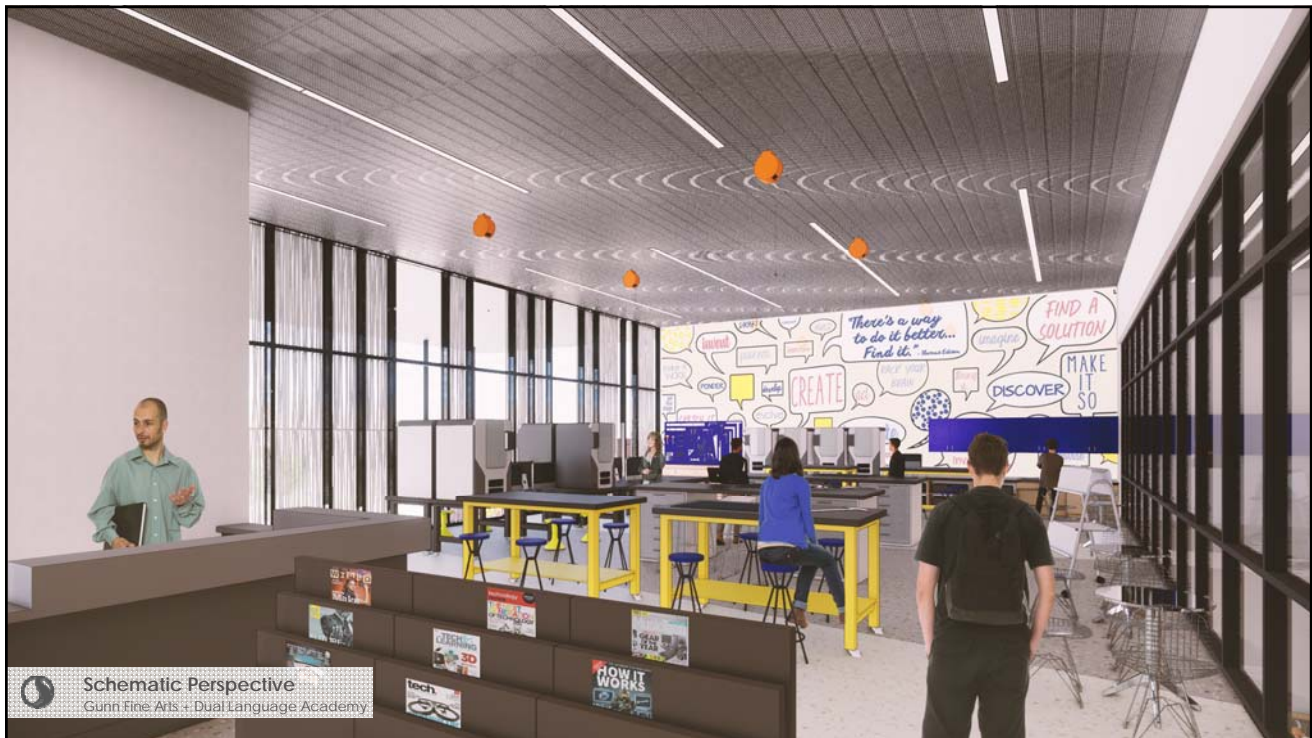








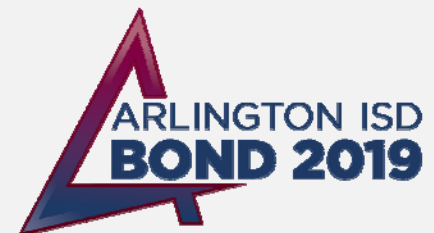




Utilization of Fine Arts Spaces

Visual Arts

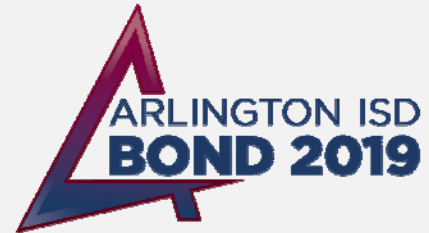
- Art
 - Dedicated 2d and 3d classrooms
 - Digital Fabrication lab—extension of 3d art to include 3d printer, vinyl Cutter, and CNC Router.
 - Outdoor patio is extension of the classroom.
 - Gallery





Utilization of Fine Arts Spaces Performing Arts

- Enhanced Stage and Performance Area
- Right-sized rooms for Choir, Band, and Orchestra
- Enhanced Theatre Classroom
- Piano Lab
- Comprehensive Dance Classroom



Timeline

August 22, 2019	Board considers schematic design
Fall 2019	RFP for Construction Manager at Risk
Spring 2020 – Summer 2021	<ul style="list-style-type: none"> ▪ Construction ▪ Instructional Planning
Spring 2021	Staffing for academy
Spring – Summer 2021	Professional Development for Academy faculty
Fall 2021	Academy program opens



Questions

Bond Program Financial Report

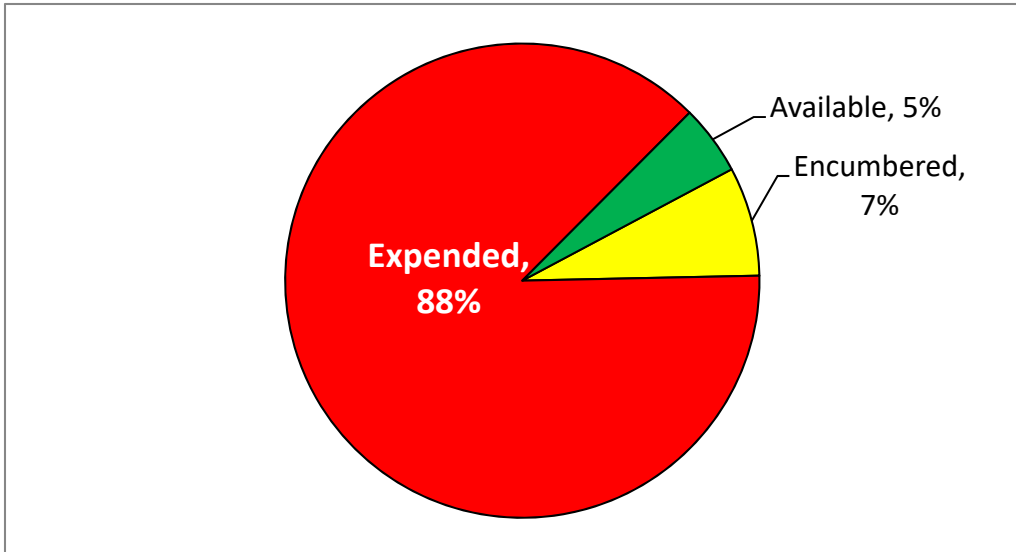


Arlington Independent School District
 Bond Fund - Phase 1 through 5 Projects (All Projects)
 For the Period Ending October 21, 2019 (as of October 21, 2019)

Funds available from:

Net proceeds from sale of bonds	\$ 668,047,133.40
Interest through 9/30/19	13,117,962.58
Career Tech Auto Tech Agreement with Moritz	202,077.00
Total Funds	\$ 681,367,172.98

Total Funds	\$ 681,367,172.98
Encumbered	(50,725,037.73)
Expended	(598,254,384.78)
Available Funds	32,387,750.47



Arlington Independent School District
 2014 Bond Project Status Report - Phase 1 through 5 Projects
 For the Period Ending October 21, 2019 (as of October 21, 2019)

<u>Project Description</u>	Total			
	<u>Budget</u>	<u>Encumbrance</u>	<u>Expenditures</u>	<u>Balance</u>
New Elementary School - Peach	24,000,000.00	450,820.58	25,372,041.42	(1,822,862.00)
New Elementary School - McNutt	24,000,000.00	79,602.00	25,019,116.79	(1,098,718.79)
Multi-purpose Activity Centers	60,000,000.00	1,306,199.01	65,970,424.11	(7,276,623.12)
New Career and Technical Center	46,253,500.00	323,081.69	49,758,818.26	(3,828,399.95)
Fine Arts Center/Land	34,500,000.00	27,128,039.67	7,545,048.25	(173,087.92)
Athletic Complex/Land	27,500,000.00	6,724,766.27	12,856,117.47	7,919,116.26
Special Ed Alt Curriculum Centers	6,500,000.00	-	4,422,380.17	2,077,619.83
Agricultural Science Facility	2,500,000.00	16,797.92	6,638,975.86	(4,155,773.78)
Workman Additions	11,872,405.00	3,600.00	13,706,935.75	(1,838,130.75)
Condition deficiencies/Life cycle replacements	315,262,422.00	13,320,426.99	284,194,255.64	17,747,739.37
Fine Arts	9,828,738.00	237,495.15	8,280,996.76	1,310,246.09
Technology	82,633,000.00	323,498.07	73,095,605.10	9,213,896.83
Transportation	18,279,213.00	810,710.38	16,579,348.74	889,153.88
Contingency for Project Acceleration	-	-	-	-
Total Phase 1-5	<u>\$ 663,129,278.00</u>	<u>\$ 50,725,037.73</u>	<u>\$ 593,440,064.32</u>	<u>\$ 18,964,175.95</u>
Bond Issuance Costs				(4,814,320.46)
Interest and Additional Proceeds				18,035,817.98
Other Income				202,077.00
Total Available Funds				<u>\$ 32,387,750.47</u>

Arlington Independent School District
 2014 Bond Project Status Report - Phase 1 through 5 Projects
 For the Period Ending October 21, 2019 (as of October 21, 2019)

<u>School Name</u>	<u>Project Description</u>	<u>Total Budget</u>	<u>Encumbrance</u>	<u>Expenditures</u>	<u>Balance</u>
Administration Building	Condition deficiencies/Life cy	\$ 509,048.00	\$ 28,250.41	\$ 359,950.24	\$ 120,847.35
Agricultural Science Facility	Agricultural Science Facility	2,500,000.00	16,797.92	6,638,975.86	(4,155,773.78)
Amos ES	Condition deficiencies/Life cy	2,040,568.00	188,676.65	1,834,095.80	17,795.55
Anderson ES	Condition deficiencies/Life cy	1,103,313.00	47,660.21	769,893.62	285,759.17
Annex I	Condition deficiencies/Life cy	418,798.00	-	-	418,798.00
Annex II	Condition deficiencies/Life cy	691,840.00	-	-	691,840.00
Annex III	Condition deficiencies/Life cy	394,821.00	-	1,685.00	393,136.00
Annex IV	Condition deficiencies/Life cy	505,031.00	-	-	505,031.00
Arlington HS	Condition deficiencies/Life cy	11,884,220.00	909,944.62	12,433,345.75	(1,459,070.37)
Arlington HS	Multi-purpose Activity Center	10,000,000.00	34,931.51	10,871,675.60	(906,607.11)
Ashworth ES	Condition deficiencies/Life cy	2,606,008.00	164,704.99	2,380,806.90	60,496.11
Atherton ES	Condition deficiencies/Life cy	4,219,440.00	28,569.96	3,722,699.09	468,170.95
Athletic Complex	Athletic Complex	25,000,000.00	6,724,766.27	12,856,117.47	5,419,116.26
Athletic Complex	Land	2,500,000.00	-	-	2,500,000.00
Auxiliary Personnel	Condition deficiencies/Life cy	182,568.00	-	-	182,568.00
Bailey JH	Condition deficiencies/Life cy	4,012,369.00	126,895.93	3,669,040.61	216,432.46
Barnett JH	Condition deficiencies/Life cy	3,377,193.00	312,030.16	3,242,739.22	(177,576.38)
Bebensee ES	Condition deficiencies/Life cy	5,422,450.00	16,928.73	3,521,013.20	1,884,508.07
Beckham ES	Condition deficiencies/Life cy	961,067.00	24,787.11	1,060,413.69	(124,133.80)
Berry ES	Condition deficiencies/Life cy	4,045,450.00	39,579.84	4,441,377.24	(435,507.08)
Blanton ES	Condition deficiencies/Life cy	3,889,823.00	466,683.67	3,833,219.78	(410,080.45)
Boles JH	Condition deficiencies/Life cy	2,580,186.00	74,060.44	3,241,896.31	(735,770.75)
Boles JH	Special Ed Alt Curriculum Center	6,500,000.00	-	4,422,380.17	2,077,619.83
Bowie HS	Condition deficiencies/Life cy	10,490,767.00	564,754.33	7,296,766.36	2,629,246.31
Bowie HS	Multi-purpose Activity Center	10,000,000.00	20,523.62	11,111,681.49	(1,132,205.11)
Bryant ES	Condition deficiencies/Life cy	2,774,728.00	328,229.70	2,115,362.11	331,136.19
Burgin ES	Condition deficiencies/Life cy	1,778,363.00	136,491.64	1,226,416.22	415,455.14
Butler ES	Condition deficiencies/Life cy	2,398,415.00	30,459.93	3,363,610.33	(995,655.26)
Career & Technical Center	New Career and Technical Center	46,253,500.00	323,081.69	49,758,818.26	(3,828,399.95)
Carter JH	Condition deficiencies/Life cy	6,219,503.00	428,671.26	4,540,700.91	1,250,130.83
Corey ES	Condition deficiencies/Life cycle replacements and Repurpose for Fine Arts/Dual Language Academy	8,974,917.00	-	8,784,908.76	190,008.24
Crouch ES	Condition deficiencies/Life cy	3,490,621.00	4,160.00	2,125,685.91	1,360,775.09

Arlington Independent School District
2014 Bond Project Status Report - Phase 1 through 5 Projects
For the Period Ending October 21, 2019 (as of October 21, 2019)

<u>School Name</u>	<u>Project Description</u>	<u>Total Budget</u>	<u>Encumbrance</u>	<u>Expenditures</u>	<u>Balance</u>
Crow ES	Condition deficiencies/Life cy	2,198,004.00	312,346.58	5,594,580.34	(3,708,922.92)
Ditto ES	Condition deficiencies/Life cy	2,508,497.00	617,533.99	4,195,225.47	(2,304,262.46)
Duff ES	Condition deficiencies/Life cy	2,967,033.00	17,637.91	4,851,870.85	(1,902,475.76)
Dunn ES	Condition deficiencies/Life cy	3,093,955.00	13,777.34	3,336,542.29	(256,364.63)
Ellis ES	Condition deficiencies/Life cy	2,356,903.00	200,045.38	5,188,776.58	(3,031,918.96)
Farrell ES	Condition deficiencies/Life cy	2,723,306.00	-	2,281,456.66	441,849.34
Ferguson JH	Condition deficiencies/Life cy	2,722,889.00	-	1,263,686.13	1,459,202.87
Fine Arts Center	Fine Arts Center	32,000,000.00	27,128,039.67	7,545,048.25	(2,673,087.92)
Fine Arts Center	Land	2,500,000.00	-	-	2,500,000.00
Fitzgerald ES	Condition deficiencies/Life cy	5,260,818.00	16,196.64	3,687,214.26	1,557,407.10
Food Lion (Brown Blvd	Condition deficiencies/Life cy	734,595.00	249,300.00	151,500.00	333,795.00
Food Svc Whse (Grn O	Condition deficiencies/Life cy	409,539.00	418,300.00	789.07	(9,550.07)
Food Svc Center (Arkar	Condition deficiencies/Life cy	1,912,230.00	375,249.87	135,234.36	1,401,745.77
Foster ES	Condition deficiencies/Life cy	4,807,179.00	-	4,769,041.46	38,137.54
Goodman ES	Condition deficiencies/Life cy	3,407,763.00	133,326.25	3,126,151.73	148,285.02
Gunn JH	Condition deficiencies/Life cy	5,071,115.00	3,261.48	3,757,759.09	1,310,094.43
Hale ES	Condition deficiencies/Life cy	2,050,103.00	311,176.90	1,826,064.62	(87,138.52)
Hill ES	Condition deficiencies/Life cy	2,368,503.00	13,347.65	2,153,254.99	201,900.36
Hilldale Center	Condition deficiencies/Life cy	310,274.00	4,100.00	-	306,174.00
Johns ES	Condition deficiencies/Life cy	2,897,843.00	61,920.29	3,131,028.59	(295,105.88)
Jones Academy	Condition deficiencies/Life cycle replacements and Repurpose for Fine Arts/Dual Language Academy	11,078,413.00	21,495.78	11,648,950.05	(592,032.83)
Key ES	Condition deficiencies/Life cy	2,779,424.00	24,889.72	3,200,000.35	(445,466.07)
Knox ES	Condition deficiencies/Life cy	5,772,537.00	9,333.60	3,872,559.47	1,890,643.93
Kooken Ed Ctr	Condition deficiencies/Life cy	2,506,102.00	175,730.65	3,169,877.25	(839,505.90)
Lamar HS	Baseball field improvement	463,881.00	-	484,080.65	(20,199.65)
Lamar HS	Condition deficiencies/Life cy	14,896,409.00	344,198.92	11,221,818.99	3,330,391.09
Lamar HS	Multi-purpose Activity Cente	10,000,000.00	167,133.08	11,574,143.99	(1,741,277.07)
Larson ES	Condition deficiencies/Life cy	2,580,618.00	49,187.32	2,608,344.33	(76,913.65)
Little ES	Condition deficiencies/Life cy	2,539,179.00	13,079.00	2,178,480.88	347,619.12
Maintenance Service C	Condition deficiencies/Life cy	1,959,037.00	-	-	1,959,037.00
Martin HS	Condition deficiencies/Life cy	17,256,164.00	238,359.01	13,408,913.02	3,608,891.97
Martin HS	Multi-purpose Activity Cente	10,000,000.00	27,804.42	10,943,627.93	(971,432.35)

Arlington Independent School District
2014 Bond Project Status Report - Phase 1 through 5 Projects
For the Period Ending October 21, 2019 (as of October 21, 2019)

<u>School Name</u>	<u>Project Description</u>	<u>Total Budget</u>	<u>Encumbrance</u>	<u>Expenditures</u>	<u>Balance</u>
McNutt Elementary	New Elementary School	24,000,000.00	79,602.00	25,019,116.79	(1,098,718.79)
Miller ES	Condition deficiencies/Life cy	3,593,599.00	6,215.00	4,618,564.41	(1,031,180.41)
Moore ES	Condition deficiencies/Life cy	2,980,321.00	56,517.27	2,798,913.46	124,890.27
Morton ES	Condition deficiencies/Life cy	5,130,853.00	30,775.68	3,845,605.58	1,254,471.74
Nichols JH	Condition deficiencies/Life cy	6,552,586.00	71,405.48	4,980,248.12	1,500,932.40
Ousley JH	Condition deficiencies/Life cy	4,537,226.00	-	4,121,272.31	415,953.69
Peach Elementary	New Elementary School	24,000,000.00	450,820.58	25,372,041.42	(1,822,862.00)
Pearcy ES	Condition deficiencies/Life cy	1,059,412.00	74,987.17	1,228,812.87	(244,388.04)
Pope ES	Condition deficiencies/Life cy	2,602,688.00	35,868.83	3,153,304.44	(586,485.27)
Prof Dev Center	Condition deficiencies/Life cy	742,220.00	-	822,493.12	(80,273.12)
Rankin ES	Condition deficiencies/Life cy	3,507,229.00	45,417.21	2,666,551.15	795,260.64
Remyse ES	Condition deficiencies/Life cy	1,523,346.00	34,831.41	2,085,908.43	(597,393.84)
Roark ES	Condition deficiencies/Life cy	3,226,361.00	16,384.50	2,906,974.11	303,002.39
Sam Houston HS	Condition deficiencies/Life cy	14,350,967.00	866,257.22	10,653,208.94	2,831,500.84
Sam Houston HS	Multi-purpose Activity Cente	10,000,000.00	804,342.10	11,039,609.85	(1,843,951.95)
Seguin HS	Condition deficiencies/Life cy	12,448,666.00	331,123.37	10,386,099.43	1,731,443.20
Seguin HS	Multi-purpose Activity Cente	10,000,000.00	251,464.28	10,429,685.25	(681,149.53)
Shackelford JH	Condition deficiencies/Life cy	2,553,279.00	82,544.46	3,810,408.16	(1,339,673.62)
Sherrrod ES	Condition deficiencies/Life cy	4,954,358.00	660,927.24	5,120,802.36	(827,371.60)
Short ES	Condition deficiencies/Life cy	3,229,818.00	17,679.71	2,995,425.00	216,713.29
South Davis ES	Condition deficiencies/Life cy	4,700,130.00	12,451.56	4,049,387.48	638,290.96
Speer ES	Condition deficiencies/Life cy	2,970,716.00	100,876.59	2,741,030.90	128,808.51
Starrett ES	Condition deficiencies/Life cy	2,727,587.00	20,933.60	1,694,475.59	1,012,177.81
Swift ES	Condition deficiencies/Life cy	2,678,199.00	9,333.60	2,549,517.71	119,347.69
Thornton ES	Condition deficiencies/Life cy	5,131,031.00	9,807.58	3,922,368.11	1,198,855.31
Transportation	Condition deficiencies/Life cy	1,274,648.00	30,105.00	38,970.00	1,205,573.00
Turning Point HS	Condition deficiencies/Life cy	1,196,537.00	799,716.85	855,930.90	(459,110.75)
Turning Point JH (Sec S	Condition deficiencies/Life cy	2,276,602.00	49,207.71	1,418,629.76	808,764.53
Venture HS/ACCHS	Condition deficiencies/Life cy	1,429,141.00	237,174.61	1,250,653.78	(58,687.39)
Webb ES	Condition deficiencies/Life cy	9,030,714.00	22,474.60	7,709,634.19	1,298,605.21
West ES	Condition deficiencies/Life cy	1,994,790.00	465,393.88	1,733,595.54	(204,199.42)
Williams ES	Condition deficiencies/Life cy	2,582,718.00	24,437.36	2,599,660.42	(41,379.78)
Wimbish ES	Condition deficiencies/Life cy	4,913,058.00	40,286.12	5,902,905.88	(1,030,134.00)
Wood ES	Condition deficiencies/Life cy	2,330,921.00	1,176,070.62	3,565,174.55	(2,410,324.17)

Arlington Independent School District
 2014 Bond Project Status Report - Phase 1 through 5 Projects
 For the Period Ending October 21, 2019 (as of October 21, 2019)

<u>School Name</u>	<u>Project Description</u>	<u>Total Budget</u>	<u>Encumbrance</u>	<u>Expenditures</u>	<u>Balance</u>
Workman JH	Condition deficiencies/Life cycle replacements/ Classroom Addition/Softball Complex	11,872,405.00	3,600.00	13,706,935.75	(1,838,130.75)
Young JH	Condition deficiencies/Life cy	2,428,881.00	445,888.90	2,758,900.41	(775,908.31)
Fine Arts		9,828,738.00	237,495.15	8,280,996.76	1,310,246.09
Technology		82,633,000.00	323,498.07	73,095,605.10	9,213,896.83
Transportation		18,279,213.00	810,710.38	16,579,348.74	889,153.88
Contingency for Project Acceleration		-	-	-	-
Total Phase 1-5		<u>\$ 663,129,278.00</u>	<u>\$ 50,725,037.73</u>	<u>\$ 593,440,064.32</u>	<u>\$ 18,964,175.95</u>
Bond Issuance Costs					(4,814,320.46)
Interest and Additional Proceeds					18,035,817.98
Other Income					<u>202,077.00</u>
Total Available Funds					<u>\$ 32,387,750.47</u>
Estimated Complete on October 21, 2019					

HUB PARTICIPATION REPORT



2014 Bond Program HUB Expenditure Summary

Phase / Bid Package	Firms	Project Description	Budget	Tier II HUB Participation Commitment %	Tier II HUB Participation Amount	Expenses To Date	Tier II HUB Participation Achieved % as of 10/24/19	Tier II HUB Participation Amount as of 10/24/19
PH1-BP1	Harrison Kornberg (HUB Firm)	Ferguson Education Center	\$ 108,509	52.30%	\$ 56,750	\$ 108,508	85.36%	\$ 92,619
PH1-BP1	Pogue Construction	Ferguson Education Center	\$ 1,142,066	20.00%	\$ 228,413	\$ 1,142,066	7.47%	\$ 85,337
PH1-BP2	Harrison Kornberg (HUB Firm)	Ousley Junior High School	\$ 420,204	42.90%	\$ 180,268	\$ 343,643	57.09%	\$ 196,169
PH1-BP2	Pogue Construction	Ousley Junior High School	\$ 4,012,350	20.00%	\$ 802,470	\$ 3,757,632	1.68%	\$ 63,313
PH1-BP3	Brown Reynolds Watford	Workman Junior High School	\$ 1,019,290	23.49%	\$ 239,431	\$ 966,428	30.48%	\$ 294,561
PH1-BP3	Pogue Construction	Workman Junior High School	\$ 12,231,679	20.00%	\$ 2,446,336	\$ 11,521,674	12.16%	\$ 1,401,092
PH1-BP4	Stantec	Jones Fine Arts and Dual Language Academy	\$ 764,228	10.00%	\$ 76,423	\$ 720,839	5.78%	\$ 41,682
PH1-BP4	Joeris	Jones Fine Arts and Dual Language Academy	\$ 10,404,039	25.00%	\$ 2,601,010	\$ 10,081,035	23.14%	\$ 2,332,872
PH1-BP5	Stantec	Boles Junior High School, Special Education	\$ 306,501	13.00%	\$ 39,845	\$ 244,881	1.52%	\$ 3,710
PH1-BP5	Pogue Construction	Boles Junior High School, Special Education	\$ 4,053,856	20.00%	\$ 810,771	\$ 3,964,606	3.36%	\$ 133,165
PH1-BP5	Stantec	Corey Fine Arts and Dual Language Academy	\$ 481,434	9.00%	\$ 43,329	\$ 476,683	7.17%	\$ 34,201
PH1-BP5	Pogue Construction	Corey Fine Arts and Dual Language Academy	\$ 7,592,619	20.00%	\$ 1,518,524	\$ 7,590,119	16.50%	\$ 1,252,085
PH1-BP6	Perkins+Will	Peach Elementary School	\$ 1,494,861	20.00%	\$ 298,972	\$ 1,486,638	16.21%	\$ 241,030
PH1-BP6	Balfour Beatty Construction	Peach Elementary School	\$ 22,567,870	25.00%	\$ 5,641,968	\$ 22,533,715	13.88%	\$ 3,128,508
PH1-BP7	Corgan	McNutt New Elementary School	\$ 1,352,289	18.00%	\$ 243,412	\$ 1,346,218	14.61%	\$ 196,649
PH1-BP7	Balfour Beatty Construction	McNutt New Elementary School	\$ 21,626,600	30.00%	\$ 6,487,980	\$ 21,587,593	35.72%	\$ 7,711,669
PH1-BP8	VLK	Career Technical Education Center	\$ 2,669,420	27.50%	\$ 734,091	\$ 2,641,515	23.66%	\$ 624,860
PH1-BP8	Balfour Beatty Construction	Career Technical Education Center	\$ 40,995,758	25.00%	\$ 10,248,940	\$ 39,698,684	33.67%	\$ 13,365,119
PH1-BP9	Huckabee	Multi-Purpose Activity Center - Arlington HS	\$ 655,052	31.00%	\$ 203,066	\$ 630,128	21.94%	\$ 138,260
PH1-BP9	Balfour Beatty Construction	Multi-Purpose Activity Center - Arlington HS	\$ 9,320,367	25.00%	\$ 2,330,092	\$ 9,317,867	10.45%	\$ 973,703
PH1-BP9	Huckabee	Multi-Purpose Activity Center - Bowie HS	\$ 550,974	31.00%	\$ 170,802	\$ 530,222	22.01%	\$ 116,703
PH1-BP9	Balfour Beatty Construction	Multi-Purpose Activity Center - Bowie HS	\$ 9,948,959	25.00%	\$ 2,487,240	\$ 9,747,445	9.67%	\$ 942,475
PH1-BP9	Huckabee	Multi-Purpose Activity Center - Lamar HS	\$ 614,291	31.00%	\$ 190,430	\$ 548,635	24.65%	\$ 135,256
PH1-BP9	Balfour Beatty Construction	Multi-Purpose Activity Center - Lamar HS	\$ 10,383,824	25.00%	\$ 2,595,956	\$ 10,175,047	7.26%	\$ 738,350
PH1-BP9	Huckabee	Multi-Purpose Activity Center - Martin HS	\$ 545,816	31.00%	\$ 169,203	\$ 520,144	26.44%	\$ 137,531

2014 Bond Program HUB Expenditure Summary

Phase / Bid Package	Firms	Project Description	Budget	Tier II HUB Participation Commitment %	Tier II HUB Participation Amount	Expenses To Date	Tier II HUB Participation Achieved % as of 10/24/19	Tier II HUB Participation Amount as of 10/24/19
PH1-BP9	Balfour Beatty Construction	Multi-Purpose Activity Center - Martin HS	\$ 9,648,146	25.00%	\$ 2,412,037	\$ 9,633,499	9.48%	\$ 912,918
PH1-BP9	Huckabee	Multi-Purpose Activity Center - Sam Houston HS	\$ 561,390	31.00%	\$ 174,031	\$ 540,629	29.08%	\$ 157,210
PH1-BP9	Balfour Beatty Construction	Multi-Purpose Activity Center - Sam Houston HS	\$ 9,990,494	25.00%	\$ 2,497,624	\$ 9,714,994	20.30%	\$ 1,971,936
PH1-BP9	Huckabee	Multi-Purpose Activity Center - Seguin HS	\$ 536,575	31.00%	\$ 166,338	\$ 501,729	25.97%	\$ 130,306
PH1-BP9	Balfour Beatty Construction	Multi-Purpose Activity Center - Seguin HS	\$ 9,399,764	25.00%	\$ 2,349,941	\$ 9,111,258	22.54%	\$ 2,053,964
PH1-BP10	KAI (HUB Firm)	Mac Bernd Professional Development Center (PDC)	\$ 67,311	15.00%	\$ 10,097	\$ 67,311	24.51%	\$ 16,500
PH1-BP10	Pogue Construction	Mac Bernd Professional Development Center (PDC)	\$ 739,408	20.00%	\$ 147,882	\$ 733,139	0.00%	\$ -
PH2-BP1	LBL	Duff Elementary School	\$ 225,517	32.00%	\$ 72,166	\$ 193,525	38.10%	\$ 73,735
PH2-BP1	Imperial Construction	Duff Elementary School	\$ 4,522,872	20.00%	\$ 904,574	\$ 4,462,490	11.91%	\$ 531,495
PH2-BP2	Hahnfield Hoffer Standford	Science Labs, Strings Room and Security Vestibule (14 Elementary Schools)	\$ 1,016,821	32.00%	\$ 325,383	\$ 992,402	12.56%	\$ 124,671
PH2-BP2	W.B. Kibler Construction Co.	Science Labs, Strings Room and Security Vestibule (14 Elementary Schools)	\$ 9,941,369	25.00%	\$ 2,485,342	\$ 9,385,473	24.89%	\$ 2,336,222
PH2-BP3	Natex (HUB Firm)	Farrell	\$ 215,748	30.00%	\$ 64,724	\$ 171,372	12.59%	\$ 21,575
PH2-BP3	W.B. Kibler Construction Co., LTD.	Farrell	\$ 2,059,961	25.00%	\$ 514,990	\$ 2,057,461	18.52%	\$ 381,053
PH2-BP3	Natex (HUB Firm)	Starrett	\$ 216,007	30.00%	\$ 64,802	\$ 193,804	11.91%	\$ 23,088
PH2-BP3	Imperial Construction	Starrett	\$ 1,468,000	20.00%	\$ 293,600	\$ 1,388,287	27.64%	\$ 383,733
PH2-BP4	KAI (HUB Firm)	1) Foster ES 2) Moore ES 3) Wood ES	\$ 781,608	15.00%	\$ 117,241	\$ 825,714	20.58%	\$ 169,944
PH2-BP4	Pogue Construction	1) Foster ES 2) Moore ES 3) Wood ES	\$ 10,978,479	20.00%	\$ 2,195,696	\$ 1,214,163	17.47%	\$ 212,142
PH2-BP5	LBL	1) Bebenssee ES 2) Fitzgerald ES 3) Williams ES	\$ 866,064	32.00%	\$ 277,141	\$ 839,044	19.19%	\$ 161,000
PH2-BP5	Imperial Construction	1) Bebenssee ES 2) Fitzgerald ES 3) Williams ES	\$ 8,623,476	20.00%	\$ 1,724,695	\$ 8,601,534	36.67%	\$ 3,154,354
PH2-BP6	WRA	1) Nichols Junior High 2) Turning Point Junior High 3) Ellis ES 4) Sherrod ES	\$ 1,339,813	21.00%	\$ 281,361	\$ 1,091,801	18.85%	\$ 205,776
PH2-BP6	Balfour Beatty Construction	1) Nichols Junior High 2) Turning Point Junior High 3) Ellis ES 4) Sherrod ES	\$ 14,448,856	25.00%	\$ 3,612,214	\$ 12,925,339	21.07%	\$ 2,723,479

2014 Bond Program HUB Expenditure Summary

Phase / Bid Package	Firms	Project Description	Budget	Tier II HUB Participation Commitment %	Tier II HUB Participation Amount	Expenses To Date	Tier II HUB Participation Achieved % as of 10/24/19	Tier II HUB Participation Amount as of 10/24/19
PH2-BP7	Corgan	1) Arlington High School 2) Morton ES 3) South Davis ES	\$ 1,373,820	18.00%	\$ 247,288	\$ 1,420,336	12.46%	\$ 176,936
PH2-BP7	Adolfson & Peterson	1) Arlington High School 2) Morton ES 3) South Davis ES	\$ 17,573,051	45.00%	\$ 7,907,873	\$ 17,326,133	38.11%	\$ 6,603,082
PH2-BP8	HKS	1) Martin High School 2) Little ES 3) Miller ES	\$ 1,517,647	16.00%	\$ 242,824	\$ 1,512,107	9.06%	\$ 137,019
PH2-BP8	Balfour Beatty Construction	1) Martin High School 2) Little ES 3) Miller ES	\$ 18,353,646	25.00%	\$ 4,588,412	\$ 18,170,296	6.35%	\$ 1,154,409
PH2-BP9	Huckabee	1) Crouch ES 2) Knox ES 3) Thornton ES	\$ 879,773	33.00%	\$ 290,325	\$ 837,038	25.04%	\$ 209,608
PH2-BP9	SEDALCO	1) Crouch ES 2) Knox ES 3) Thornton ES	\$ 8,353,276	20.00%	\$ 1,670,655	\$ 838,247	25.13%	\$ 210,671
PH2-BP9	Huckabee	Sam Houston High School	\$ 2,054,938	33.00%	\$ 678,129	\$ 2,008,267	14.77%	\$ 296,717
PH2-BP9	Pogue Construction	Sam Houston High School	\$ 30,068,039	20.00%	\$ 6,013,608	\$ 29,182,169	1.61%	\$ 469,131
PH2-BP10	VLK	Agricultural Science Facility	\$ 448,499	27.50%	\$ 123,337	\$ 441,998	19.21%	\$ 84,900
PH2-BP10	Ratcliff Constructors	Agricultural Science Facility	\$ 5,956,076	20.00%	\$ 1,191,215	\$ 5,955,535	20.80%	\$ 1,238,900
PH3-BP1	LBL	Butler Elementary School	\$ 228,525	52.30%	\$ 119,518	\$ 222,031	17.76%	\$ 39,433
PH3-BP1	Phillips May Corporation	Butler Elementary School	\$ 2,917,386	22.00%	\$ 641,825	\$ 2,900,429	22.70%	\$ 658,462
PH3-BP2	Perkins+Will	Dunn Elementary School	\$ 188,209	20.00%	\$ 37,642	\$ 228,161	4.81%	\$ 10,973
PH3-BP2	Imperial Construction	Dunn Elementary School	\$ 3,013,228	10.00%	\$ 301,323	\$ 3,013,228	30.50%	\$ 918,960
PH3-BP3	Brown Reynolds Watford	1) Hill ES 2) Swift ES	\$ 360,795	42.90%	\$ 154,781	\$ 345,605	14.56%	\$ 50,316
PH3-BP3	MART, Inc.	1) Hill ES 2) Swift ES	\$ 4,157,930	20.00%	\$ 831,586	\$ 3,901,585	47.35%	\$ 1,847,345
PH3-BP4	Perkins+Will	1) Amos 2) Atherton	\$ 380,787	20.00%	\$ 76,157	\$ 367,563	5.69%	\$ 20,900
PH3-BP4	Pete Durant & Associates	1) Amos 2) Atherton	\$ 4,826,670	30.00%	\$ 1,448,001	\$ 4,912,551	31.12%	\$ 1,528,744
PH3-BP5	Corgan	1) Gunn JH 2) Key ES 3) Short ES	\$ 646,164	23.49%	\$ 151,784	\$ 574,128	3.76%	\$ 21,600
PH3-BP5	Big Sky	1) Gunn JH 2) Key ES 3) Short ES	\$ 7,746,940	35.00%	\$ 2,711,429	\$ 7,646,271	44.79%	\$ 3,424,901
PH3-BP6	Stantec	Seguin HS	\$ 710,158	20.00%	\$ 142,032	\$ 665,993	0.83%	\$ 5,540
PH3-BP6	Pogue Construction	Seguin HS	\$ 9,658,348	20.00%	\$ 1,931,670	\$ 9,450,049	6.24%	\$ 589,864

2014 Bond Program HUB Expenditure Summary

Phase / Bid Package	Firms	Project Description	Budget	Tier II HUB Participation Commitment %	Tier II HUB Participation Amount	Expenses To Date	Tier II HUB Participation Achieved % as of 10/24/19	Tier II HUB Participation Amount as of 10/24/19
PH3-BP7	VLK	1) Berry ES 2) Rankin ES 3) Roark ES	\$ 751,979	23.49%	\$ 176,640	\$ 669,297	11.66%	\$ 78,056
PH3-BP7	Reeder General Contractors, Inc.	1) Berry ES 2) Rankin ES 3) Roark ES	\$ 9,094,420	20.00%	\$ 1,818,884	\$ 8,788,087	26.21%	\$ 2,303,673
PH3-BP8	Brown Reynolds Watford	1) Pope ES 2) Speer ES 3) Webb ES 4) Wimbish ES	\$ 1,419,632	10.00%	\$ 141,963	\$ 1,429,380	25.59%	\$ 365,786
PH3-BP8	Core Construction	1) Pope ES 2) Speer ES 3) Webb ES 4) Wimbish ES	\$ 16,139,281	20.00%	\$ 3,227,856	\$ 16,423,756	19.29%	\$ 3,168,655
PH3-BP9	Stantec	Junior High Tracks	\$ 367,642	25.00%	\$ 91,910	\$ 512,335	0.00%	\$ -
PH3-BP9	Hellas Construction	Junior High Tracks	\$ 7,928,161	20.00%	\$ -	\$ 7,596,116	11.58%	\$ 879,261
PH3-BP10	LBL	1) Johns ES 2) Goodman ES 3) Webb ES	\$ 536,738	20.00%	\$ 107,348	\$ 487,540	26.74%	\$ 130,366
PH3-BP10	Infinity	1) Johns ES 2) Goodman ES	\$ 2,463,336	20.00%	\$ 492,667	\$ 2,199,734	0.90%	\$ 19,801
PH3-BP10	Phillips May Corporation	1) Johns ES 2) Goodman ES	\$ 3,129,598	20.00%	\$ 625,920	\$ 3,025,175	41.84%	\$ 1,265,818
PH3-BP10	Mart, Inc.	1) Johns ES 2) Webb ES	\$ 1,115,982	20.00%	\$ 223,196	\$ 1,098,579	0.00%	\$ -
PH3-BP11	HKS	Fine Arts	\$ 3,353,275	25.07%	\$ 840,666	\$ 2,914,034	22.65%	\$ 660,148
PH3-BP11	Adolfson & Peterson	Fine Arts	\$ 42,418,744	20.00%	\$ 8,483,749	\$ 23,507,225	18.76%	\$ 4,410,371
PH3-BP12	Brown Reynolds Watford	Lamar HS	\$ 46,905	20.00%	\$ 9,381	\$ 46,905	21.32%	\$ 10,000
PH3-BP12	Hutcherson	Lamar HS	\$ 499,710	20.00%	\$ 99,942	\$ 499,710	16.55%	\$ 82,700
PH4-BP01	LBL	Boles Junior High	\$ 156,787	27.00%	\$ 42,332	\$ 152,025	13.48%	\$ 20,497
PH4-BP01	Imperial Construction	Boles Junior High	\$ 2,062,985	20.00%	\$ 412,597	\$ 1,779,649	28.87%	\$ 513,698
PH4-BP02	LBL	Early College High School	\$ 536,476	27.00%	\$ 144,849	\$ 604,985	16.10%	\$ 97,400
PH4-BP02	Ratcliff Constructors	Early College High School	\$ 7,440,217	20.00%	\$ 1,488,043	\$ 7,203,056	10.99%	\$ 791,498
PH4-BP03	LBL	1) Bailey Junior High 2) Kookan Education Center	\$ 387,518	27.00%	\$ 104,630	\$ 375,523	11.98%	\$ 44,995
PH4-BP03	Imperial Construction	1) Bailey Junior High 2) Kookan Education Center	\$ 4,918,136	20.00%	\$ 983,627	\$ 3,757,366	15.98%	\$ 600,354
PH4-BP04	PBK	1) Bowie High School 2) Ashworth Elementary	\$ 637,103	20.00%	\$ 127,421	\$ 472,577	0.00%	\$ -

2014 Bond Program HUB Expenditure Summary

Phase / Bid Package	Firms	Project Description	Budget	Tier II HUB Participation Commitment %	Tier II HUB Participation Amount	Expenses To Date	Tier II HUB Participation Achieved % as of 10/24/19	Tier II HUB Participation Amount as of 10/24/19
PH4-BP04	Adolfson & Peterson	1) Bowie High School 2) Ashworth Elementary	\$ 8,225,500	20.00%	\$ 1,645,100	\$ 6,551,418	26.53%	\$ 1,738,312
PH4-BP05	Brown Reynolds Watford	1) Lamar High School 2) Larson Elementary	\$ 957,971	26.00%	\$ 249,072	\$ 943,236	26.79%	\$ 252,711
PH4-BP05	Imperial Construction	1) Lamar High School/Cravens Field 2) Larson Elementary	\$ 10,988,535	20.00%	\$ 2,197,707	\$ 943,236	26.79%	\$ 252,711
PH4-BP06	HKS	Athletic Complex	\$ 2,980,738	27.00%	\$ 804,799	\$ 2,503,836	21.83%	\$ 546,705
PH4-BP06	Adolfson & Peterson	Athletic Complex	\$ 40,755,256	20.00%	\$ 8,151,051	\$ 23,507,725	18.76%	\$ 4,410,371
PH4-BP07	VLK	1) Carter Junior High 2) Blanton Elementary 3) Crow Elementary	\$ 725,277	16.00%	\$ 116,044	\$ 649,832	8.92%	\$ 57,950
PH4-BP07	Reeder General Contractors, Inc.	1) Carter Junior High 2) Blanton Elementary 3) Crow Elementary	\$ 8,300,000	20.00%	\$ 1,660,000	\$ 3,756,370	54.04%	\$ 2,029,957
PH5-BP01	BRW	1) Beckham Elementary 2) Pearcy Elementary 3) Food Service Warehouse	\$ 108,755	25.50%	\$ 27,732	\$ 117,518	32.56%	\$ 38,266
PH5-BP01	Hutcherson Construction Inc	1) Beckham Elementary 2) Pearcy Elementary 3) Food Service Warehouse	\$ 1,126,230	23.00%	\$ 259,033	\$ 519,926	11.53%	\$ 59,969
PH5-BP02	VLK	1) Anderson Elementary 2) Remyse Elementary	\$ 1,679,391	71.00%	\$ -	\$ 162,935	7.81%	\$ 12,725
PH5-BP02	Phillips May Corporation	1) Anderson Elementary 2) Remyse Elementary	\$ 1,679,391	23.00%	\$ 386,260	\$ 1,483,821	19.70%	\$ 292,304
PH5-BP03	BRW	1) Shackelford Junior High 2) Brown Blvd. Warehouse	\$ 1,925,278	25.50%	\$ 490,946	\$ 153,177	12.38%	\$ 60,067
PH5-BP03	Imperial Construction	1) Shackelford Junior High 2) Brown Blvd. Warehouse	\$ 2,153,828	20.00%	\$ 430,766	\$ 1,998,534	21.53%	\$ 430,207
PH5-BP04	VLK	1) Burgin Elementary 2) Hale Elementary	\$ 2,442,244	71.00%	\$ 1,733,993	\$ 182,912	11.02%	\$ 20,150
PH5-BP04	Big Sky	1) Burgin Elementary 2) Hale Elementary	\$ 2,209,146	30.00%	\$ 662,744	\$ 193,032	40.50%	\$ 78,178
PH5-BP05	LBL	1) 5618 Arkansas Ln. 2) Young Junior High 3) Ditto ES 4) Hilldale Annex	\$ 1,452,320	25.00%	\$ 363,080	\$ 541,087	13.90%	\$ 75,200
PH5-BP05	Big Sky	1) 5618 Arkansas Ln. 2) Young Junior High 3) Ditto ES 4) Hilldale Annex	\$ 6,497,000	30.00%	\$ 1,949,100	\$ 2,618,563	70.13%	\$ 1,836,500
PH5-BP06	Corgan	1) Barnett Junior High 2) Bryant Elementary 3) West ES	\$ 486,257	30.00%	\$ 145,877	\$ 442,108	1.42%	\$ 6,300

2014 Bond Program HUB Expenditure Summary

Phase / Bid Package	Firms	Project Description	Budget	Tier II HUB Participation Commitment %	Tier II HUB Participation Amount	Expenses To Date	Tier II HUB Participation Achieved % as of 10/24/19	Tier II HUB Participation Amount as of 10/24/19
PH5-BP06	RJM	1) Barnett Junior High 2) Bryant Elementary 3) West ES	\$ 5,362,000	35.00%	\$ 1,876,700	\$ 4,134,447	11.40%	\$ 471,160
PH5-BP07	LBL	1) Administration Building 2) Auxillary Personnel 3) Annex I 4) Annex II 5) Annex III 6) Annex IV 7) Food Service Warehouse 8) Service Center 9) Transportation	\$ 202,141	25.00%	\$ 50,535	\$ 44,514	0.00%	\$ -
TOTALS			\$ 579,986,321	23.43%	\$ 135,883,172	\$ 483,237,934	20.27%	\$ 97,937,249

FINE ARTS



**Arlington ISD - Department of Fine Arts
Bond Purchase Progress
10/17/19**

The following is a break-down of what has been submitted for purchase by the AISD Fine Arts Department using money provided by the 2014 bond package for year 5 to-date. This is a reporting of 644 funds.

Band	HS	\$427,063.90
	JH	\$118,862.72
	Total	\$545,926.62
Choir	HS	\$6,641.92
	JH	\$9,311.49
	Total	\$15,953.41
Elementary Music	Total	\$147,967.01
Orchestra	HS	\$197,840.77
	JH	\$79,609.15
	Elementary	\$153,919.30
	Total	\$431,369.22
Theatre	HS	\$21,406.87
	JH	\$6,572.31
	Total	\$27,979.18
Mariachi	Total	\$12,427.95
Dance	Total	\$2,191.32
Total Bond Expenditures		\$1,183,814.71
Total 644 Bond Funds		\$2,085,183.00
Funds Remaining		\$901,368.29

Instrument	Elementary	Junior High	High School	Total
Flute			22	22
Oboe		1	2	3
Clarinet		19	13	32
Bassoon		1	2	3
Alto Sax			8	8
Tenor Sax				0
Bari Sax			5	5
Bass Clarinet			4	4
F Horn		5		5
Trumpet		17	13	30
Trombone		14	9	23
Euphonium		5	5	10
Tuba		2	5	7
Sousaphone			0	0
Vibraphone			4	4
Xylophone			1	1
Marimba		7	3	10
Snare Drum			2	2
Bass Drum			2	2
Marching Horns				0
Timpani (sets)				0
Chimes			1	1
Guittaron/Vihuela			17	17
Violin	47	18	36	101
Viola	35	11	16	62
Cello	39	10	21	70
String Bass	13	10	3	26
Harps			1	1

Additional equipment includes:

- Chairs
- Risers
- Orff Instruments
- Music Stands
- Electronic Equipment including tuners, metronomes and keyboards
- Cases
- Miscellaneous Percussion Instruments
- Marching Percussion Instruments
- Pianos
- Fine Arts Dual Language equipment
- Bows
- Drill Team Uniforms
- Supplemental High School and Junior High School Uniforms

ARLINGTON INDEPENDENT SCHOOL DISTRICT
2014 Bond Purchases - Fine Arts
Year-to-Date Year 5

	Band	Choir	Orchestra	Mariachi	Theatre	Dance	Elementary Music	Total
Arlington HS	\$71,276.80	\$815.75	\$28,480.00		\$3,168.00	\$2,191.32		\$105,931.87
Bowie HS	\$74,670.67	\$658.17	\$1,484.63		\$2,651.05	\$0.00		\$79,464.52
Lamar HS	\$0.00	\$0.00	\$47,645.84		\$7,732.82	\$0.00		\$55,378.66
Martin HS	\$86,067.80	\$5,168.00	\$41,304.70		\$7,855.00	\$0.00		\$140,395.50
Sam Houston HS	\$72,844.80	\$0.00	\$13,535.00	\$12,427.95	\$0.00	\$0.00		\$98,807.75
Seguin HS	\$122,203.83	\$0.00	\$65,390.60		\$0.00	\$0.00		\$187,594.43
Bailey JH	\$14,145.50	\$0.00	\$28,670.80		\$0.00			\$42,816.30
Barnett JH	\$0.00	\$0.00	\$22,031.90		\$0.00			\$22,031.90
Boles JH	\$19,048.00	\$1,163.09	\$18,099.85		\$0.00			\$38,310.94
Carter JH	\$2,029.82	\$0.00	\$0.00		\$0.00			\$2,029.82
Gunn JH	\$42,602.50	\$0.00	\$0.00		\$0.00			\$42,602.50
Nichols JH	\$9,174.00	\$0.00	\$7,387.60		\$3,078.55			\$19,640.15
Ousley JH	\$22,073.90	\$0.00	\$0.00		\$0.00			\$22,073.90
Shackelford JH	\$0.00	\$0.00	\$0.00		\$0.00			\$0.00
Workman JH	\$0.00	\$0.00	\$0.00		\$0.00			\$0.00
Young JH	\$9,789.00	\$8,148.40	\$3,419.00		\$3,493.76			\$24,850.16

Program does not exist on the campus

Updated Since Last Report

Note: The expenditures reported above are from the Year 5 fine arts bond funds and do not reflect purchases made prior to Year 5.

ARLINGTON INDEPENDENT SCHOOL DISTRICT
 2014 Bond Purchases - Fine Arts
 Year-to-Date Year 5

	Band	Choir	Orchestra	Mariachi	Theatre	Dance	Elementary Music	Total
Adams ES			\$0.00				\$1,338.93	\$1,338.93
Amos ES			\$0.00				\$1,716.95	\$1,716.95
Anderson ES			\$5,132.40				\$9,899.97	\$15,032.37
Ashworth ES			\$0.00				\$0.00	\$0.00
Atherton ES			\$6,119.90				\$0.00	\$6,119.90
Bebensee ES			\$0.00				\$780.58	\$780.58
Beckham ES			\$0.00				\$0.00	\$0.00
Berry ES			\$9,561.91				\$0.00	\$9,561.91
Blanton ES			\$0.00				\$0.00	\$0.00
Bryant ES			\$1,271.30				\$0.00	\$1,271.30
Burgin ES			\$0.00				\$0.00	\$0.00
Butler ES			\$0.00				\$3,173.92	\$3,173.92
Corey Academy			\$0.00				\$41,512.18	\$41,512.18
Crouch ES			\$3,307.50				\$0.00	\$3,307.50
Crow ES			\$1,860.70				\$0.00	\$1,860.70
Ditto ES			\$0.00				\$1,987.89	\$1,987.89
Duff ES			\$36,256.50				\$0.00	\$36,256.50
Dunn ES			\$6,075.00				\$0.00	\$6,075.00
Ellis ES			\$1,174.40				\$6,707.59	\$7,881.99
Farrell ES			\$751.30				\$0.00	\$751.30
Fitzgerald ES			\$0.00				\$0.00	\$0.00
Foster ES			\$1,456.90				\$1,814.00	\$3,270.90
Goodman ES			\$8,912.15				\$0.00	\$8,912.15
Hale ES			\$0.00				\$1,375.70	\$1,375.70
Hill ES			\$13,933.40				\$0.00	\$13,933.40
Johns ES			\$0.00				\$2,827.95	\$2,827.95
Jones Academy			\$0.00				\$35,295.57	\$35,295.57
Key ES			\$0.00				\$0.00	\$0.00
Knox ES			\$7,098.95				\$0.00	\$7,098.95
Larson ES			\$0.00				\$0.00	\$0.00
Little ES			\$0.00				\$0.00	\$0.00
McNutt ES			\$0.00				\$0.00	\$0.00
Miller ES			\$3,312.00				\$0.00	\$3,312.00
Moore ES			\$10,082.99				\$0.00	\$10,082.99
Morton ES			\$0.00				\$1,587.56	\$1,587.56

Program does not exist on the campus

Updated Since Last Report

Note: The expenditures reported above are from the Year 5 fine arts bond funds and do not reflect purchases made prior to Year 5.

ARLINGTON INDEPENDENT SCHOOL DISTRICT
2014 Bond Purchases - Fine Arts
Year-to-Date Year 5

	Band	Choir	Orchestra	Mariachi	Theatre	Dance	Elementary Music	Total
Patrick ES			\$0.00				\$2,904.69	\$2,904.69
Peach ES			\$0.00				\$1,578.30	\$1,578.30
Pearcy ES			\$0.00				\$1,371.07	\$1,371.07
Pope ES			\$0.00				\$0.00	\$0.00
Rankin ES			\$5,811.90				\$4,268.34	\$10,080.24
Remyse ES			\$2,892.00				\$0.00	\$2,892.00
Roark ES			\$0.00				\$0.00	\$0.00
Sherrod ES			\$3,243.70				\$1,468.73	\$4,712.43
Short ES			\$2,502.80				\$0.00	\$2,502.80
South Davis ES			\$7,836.75				\$0.00	\$7,836.75
Speer ES			\$0.00				\$0.00	\$0.00
Starrett ES			\$8,326.95				\$9,789.24	\$18,116.19
Swift ES			\$1,880.00				\$1,056.90	\$2,936.90
Thornton ES			\$2,876.90				\$0.00	\$2,876.90
Webb ES			\$0.00				\$620.24	\$620.24
West ES			\$1,166.00				\$0.00	\$1,166.00
Williams ES			\$0.00				\$0.00	\$0.00
Wimbish ES			\$0.00				\$5,262.96	\$5,262.96
Wood ES			\$1,075.00				\$9,627.75	\$10,702.75
Fine Arts Center	\$0.00	\$0.00	\$0.00	\$0.00	\$0.00	\$0.00	\$0.00	\$0.00
Total	\$545,926.62	\$15,953.41	\$431,369.22	\$12,427.95	\$27,979.18	\$2,191.32	\$147,967.01	\$1,183,814.71

Program does not exist on the campus

Updated Since Last Report

Note: The expenditures reported above are from the Year 5 fine arts bond funds and do not reflect purchases made prior to Year 5.

SAFETY, SECURITY & TECHNOLOGY



TECHNOLOGY OPERATIONS, BOND UPDATE: 10/2019

NETWORK INFRASTRUCTURE

- Non-Instructional Facility (NIF) network upgrades are complete, and we are providing continued support as needed.
- Upcoming network upgrades at the following schools:

Adams ES	Goodman ES	Rankin ES
Anderson ES	Gunn JHS	Roark ES
Bailey JHS	Hale ES	Sam Houston HS
Barnett JHS	Hill ES	Shackelford JHS
Beckham ES	Johns ES	South Davis ES
Berry ES	Key ES	Speer ES
Boles JHS	Lamar HS	Starrett ES
Bryant ES	Larson ES	Thornton ES
Butler ES	Martin HS	West ES
Corey ES	Miller ES	Wood ES
Dunn ES	Nichols JHS	Workman JHS
Ellis ES	Ousley JHS	Young JHS
Farrell ES	Pearcy ES	
Fitzgerald ES	Pope ES	

- Network Services continues to conduct data closet evaluation and upgrades for planned 2019-2020 Network Upgrades

PHYSICAL SECURITY

VIDEO SURVEILLANCE UPGRADES

- This project is complete, and we are providing continued support as needed.

UNIFIED COMMUNICATIONS

PA SYSTEM UPGRADES

- All projects are complete, and we are providing continued support as needed.

IP PHONE REFRESH

- All projects are complete, and we are providing continued support as needed.

DATA CENTER/SERVER ADMINISTRATION

- All projects are complete, and we are providing continued support as needed.

TECHNOLOGY SUPPORT & CUSTOMER SERVICE

DESKTOP/CLIENT DEVICES

- Virtual Desktop Infrastructure endpoints are being piloted at 3 JHS campuses:
 - Shackelford JHS, Gunn JHS, Young JHS
 - We will evaluate a continued rollout to all appropriate spaces in the October-November timeframe.

COPIER PROJECT/PRINTER STANDARD

Completed Campuses:

- ACCHS
- Arlington HS

The following campuses are next on the schedule to receive new copiers as part of the district printer & copier standard:

- South Davis ES
- Remyse ES
- Starrett ES
- Duff ES
- Butler ES
- Ditto ES
- Annex III
- Remaining schools and non-instructional facilities will be targeted in the Spring semester.

CLASSROOM AV STANDARD

- The overall project has completed, and we are providing continued support and ad-hoc installations as needs arise.

DEVICE PURCHASES

- Device purchases for the Professional Development Center are in progress as part of the device refresh initiative.
- Chromebooks and carts for Moore Elementary are being purchased to continue supporting the district standard of 2:1.
- Device and equipment purchased for ACCHS for campus startup.
- Chromebooks were purchase for Percy ES to maintain the district classroom standard.
- Devices were purchased for various campuses due to staff growth needs.

Network and Installation Services Technology Bond Expenditures

Spent		\$20,539,651.61	\$4,360,155.00	\$2,527,049.00	\$6,317,683.00	\$2,646,381.00	\$4,527,524.00	\$239,970.71
		Total	640(14-15)	641(15-16)	642(16-17)	643(17-18)	644(18-19)	645(19-20)
Loc	Campus	Amount	Amount	Amount	Amount	Amount	Amount	Amount
001	Arlington HS	\$194,411.24	\$26,015.00	\$36,362.00	\$31,355.00	\$96,879.00	\$2,914.00	\$886.24
002	Sam Houston HS	\$261,308.00	\$126,649.00	\$47,607.00	\$31,355.00	\$4,575.00	\$51,122.00	\$-
003	Lamar HS	\$99,257.00	\$-	\$13,445.00	\$31,355.00	\$42,440.00	\$12,017.00	\$-
004	Bowie HS	\$252,962.00	\$31,058.00	\$48,770.00	\$31,355.00	\$136,544.00	\$5,235.00	\$-
005	Martin HS	\$184,979.50	\$-	\$19,627.00	\$31,355.00	\$28,816.00	\$104,734.00	\$447.50
006	ACHS	\$6,112.00	\$180.00	\$5,382.00	\$-	\$-	\$-	\$550.00
007	Turning Point HS	\$78,502.00	\$78,052.00	\$-	\$-	\$450.00	\$-	\$-
008	Newcomer Center							
009	Seguin HS	\$226,232.00	\$-	\$8,039.00	\$31,355.00	\$176,857.00	\$9,981.00	\$-
010	JJAEP							
012	Career and Technology Center	\$24,630.00	\$-	\$8,038.00	\$-	\$16,592.00	\$-	\$-
013	Agricultural Center	\$2,235.00	\$-	\$-	\$-	\$2,235.00	\$-	\$-
014	ACCHS	\$-	\$-	\$-	\$-	\$-	\$-	\$79,111.10
041	Carter JHS	\$166,727.00	\$34,587.00	\$95,178.00	\$-	\$36,512.00	\$450.00	\$-
045	Bailey JHS	\$30,424.00	\$1,669.00	\$2,340.00	\$-	\$24,301.00	\$2,114.00	\$-
047	Gunn JHS	\$60,495.00	\$240.00	\$-	\$-	\$29,900.00	\$30,355.00	\$-
048	Shackelford JHS	\$52,799.00	\$563.00	\$32,910.00	\$-	\$19,326.00	\$-	\$-
049	Young JHS	\$90,675.00	\$565.00	\$11,802.00	\$-	\$34,983.00	\$43,325.00	\$-
050	Workman JHS	\$172,849.00	\$27,881.00	\$37,708.00	\$-	\$56,372.00	\$50,888.00	\$-
051	Boles JHS	\$67,131.00	\$977.00	\$837.00	\$-	\$29,317.00	\$36,000.00	\$-
052	Barnett JHS	\$83,258.00	\$-	\$11,672.00	\$-	\$-	\$71,586.00	\$-
053	Nichols JHS	\$51,189.00	\$2,566.00	\$8,926.00	\$-	\$3,899.00	\$35,798.00	\$-
054	Turning Point JHS	\$105,141.00	\$81,171.00	\$-	\$-	\$23,970.00	\$-	\$-
055	Ousley JHS	\$85,572.00	\$3,547.00	\$5,052.00	\$-	\$40,973.00	\$36,000.00	\$-
056	Ferguson JHS	\$179,401.00	\$690.00	\$91,299.00	\$-	\$87,412.00	\$-	\$-
101	Berry ES	\$105,098.00	\$-	\$102,097.00	\$-	\$135.00	\$2,866.00	\$-
102	Blanton ES	\$115,768.00	\$115,768.00	\$-	\$-	\$-	\$-	\$-
103	Crow ES	\$97,537.00	\$94,605.00	\$2,383.00	\$-	\$549.00	\$-	\$-
104	Duff ES	\$116,464.00	\$28,899.00	\$33,348.00	\$-	\$30,737.00	\$-	\$23,480.00
107	Kooken ES	\$88,191.00	\$-	\$50,880.00	\$-	\$36,906.00	\$-	\$405.00
109	Rankin ES	\$64,336.00	\$8,168.00	\$50,552.00	\$-	\$225.00	\$5,391.00	\$-
110	Roark ES	\$69,800.00	\$22,986.00	\$45,710.00	\$-	\$879.00	\$225.00	\$-
111	South Davis ES	\$121,636.00	\$7,458.00	\$113,151.00	\$-	\$108.00	\$919.00	\$-
112	Speer ES	\$93,462.00	\$14,681.00	\$74,037.00	\$-	\$4,744.00	\$-	\$-
113	Swift ES	\$157,706.20	\$112,530.00	\$30,073.00	\$-	\$3,384.00	\$587.00	\$11,132.20
114	Thornton ES	\$98,307.00	\$30,376.00	\$65,155.00	\$-	\$873.00	\$1,903.00	\$-
116	Wimbish ES	\$153,916.00	\$143,967.00	\$8,749.00	\$-	\$-	\$-	\$1,200.00
117	Hill ES	\$60,855.10	\$-	\$34,026.00	\$-	\$-	\$22,619.00	\$4,210.10
119	Goodman ES	\$92,456.00	\$21,395.00	\$68,687.00	\$-	\$2,059.00	\$315.00	\$-
120	Pope ES	\$90,494.00	\$16,284.00	\$74,210.00	\$-	\$-	\$-	\$-
121	Johns ES	\$97,051.00	\$17,494.00	\$77,254.00	\$-	\$-	\$2,303.00	\$-
123	Short ES	\$145,095.00	\$131,427.00	\$13,668.00	\$-	\$-	\$-	\$-
124	Amos ES	\$101,034.00	\$89,892.00	\$10,682.00	\$-	\$460.00	\$-	\$-
125	Dunn ES	\$78,581.00	\$27,394.00	\$47,432.00	\$-	\$3,755.00	\$-	\$-
126	Foster ES	\$103,119.00	\$82,219.00	\$18,780.00	\$-	\$2,120.00	\$-	\$-
128	Key ES	\$61,193.24	\$25,672.00	\$33,003.00	\$-	\$-	\$405.00	\$2,113.24
129	Butler ES	\$67,336.00	\$408.00	\$26,800.00	\$-	\$3,810.00	\$36,318.00	\$-

130	Ditto ES	\$87,797.00	\$28,322.00	\$26,800.00	\$-	\$32,450.00	\$225.00	\$-
131	Morton ES	\$122,230.00	\$89,404.00	\$2,926.00	\$-	\$29,900.00	\$-	\$-
132	Atherton ES	\$142,307.00	\$110,847.00	\$1,560.00	\$-	\$29,900.00	\$-	\$-
133	Wood ES	\$31,659.00	\$180.00	\$3,154.00	\$-	\$-	\$28,325.00	\$-
134	Sherrrod ES	\$123,946.00	\$116,896.00	\$7,050.00	\$-	\$-	\$-	\$-
135	Miller ES	\$57,104.00	\$-	\$6,693.00	\$-	\$-	\$50,411.00	\$-
136	Fitzgerald ES	\$51,596.00	\$22,399.00	\$-	\$-	\$3,276.00	\$25,921.00	\$-
137	Corey ES	\$34,216.00	\$-	\$32,937.00	\$-	\$1,279.00	\$-	\$-
140	Starrett ES	\$40,640.00	\$14,446.00	\$-	\$-	\$3,123.00	\$23,071.00	\$-
141	Bebensee ES	\$141,780.00	\$124,444.00	\$16,904.00	\$-	\$432.00	\$-	\$-
142	Ellis ES	\$86,076.00	\$39,469.00	\$46,607.00	\$-	\$-	\$-	\$-
143	Farrell ES	\$47,194.00	\$17,138.00	\$-	\$-	\$2,839.00	\$27,217.00	\$-
144	Moore ES	\$86,834.00	\$32,215.00	\$26,526.00	\$-	\$28,093.00	\$-	\$-
145	Williams ES	\$144,252.00	\$139,646.00	\$4,606.00	\$-	\$-	\$-	\$-
146	Little ES	\$85,119.00	\$26,296.00	\$29,601.00	\$-	\$29,222.00	\$-	\$-
147	Bryant ES	\$59,064.00	\$120.00	\$1,050.00	\$-	\$33,168.00	\$24,726.00	\$-
148	Webb ES	\$139,090.00	\$129,488.00	\$7,955.00	\$-	\$1,647.00	\$-	\$-
149	Ashworth ES	\$73,337.00	\$20,129.00	\$8,510.00	\$-	\$44,698.00	\$-	\$-
150	Crouch ES	\$77,109.00	\$70,986.00	\$3,000.00	\$-	\$3,123.00	\$-	\$-
151	Larson ES	\$28,530.00	\$18,079.00	\$9,776.00	\$-	\$450.00	\$225.00	\$-
152	West ES	\$49,461.00	\$16,212.00	\$9,167.00	\$-	\$900.00	\$23,182.00	\$-
153	Hale ES	\$41,405.00	\$1,680.00	\$39,725.00	\$-	\$-	\$-	\$-
154	Pearcy ES	\$23,351.00	\$7,447.00	\$-	\$-	\$-	\$15,904.00	\$-
155	Burgin ES	\$84,463.00	\$75,277.00	\$9,186.00	\$-	\$-	\$-	\$-
157	Knox ES	\$151,377.00	\$2,070.00	\$76,963.00	\$-	\$70,772.00	\$1,572.00	\$-
158	Beckham ES	\$34,968.00	\$16,795.00	\$-	\$-	\$-	\$18,173.00	\$-
159	Remyse ES	\$111,508.00	\$108,700.00	\$2,808.00	\$-	\$-	\$-	\$-
160	Anderson ES	\$83,981.00	\$18,473.00	\$65,508.00	\$-	\$-	\$-	\$-
161	Adams ES	\$95.00	\$-	\$-	\$-	\$95.00	\$-	\$-
162	Patrick ES	\$-	\$-	\$-	\$-	\$-	\$-	\$-
163	Jones ES	\$109,943.00	-	\$41,380.00	\$8,140.00	\$56,432.00	\$3,991.00	\$-
164	Peach ES	\$8,825.00	\$-	\$8,825.00	\$-	\$-	\$-	\$-
165	McNutt ES	\$7,414.00	\$-	\$6,379.00	\$-	\$810.00	\$225.00	\$-
253	Fine Arts Center							\$-
254	Athletics Complex							\$-
832	Network Operations Center	\$7,020,727.00	\$-	\$134,366.00	\$5,253,716.00	\$36,170.00	\$1,596,475.00	\$-
901	Service Center	\$4,985.00	\$-	\$-	\$-	\$-	\$4,985.00	\$-
915	JW Counts Admin. Bldg.	\$1,622,291.63	\$480.00	\$-	\$-	\$3,547.00	\$1,600,345.00	\$17,919.63
916	Annex I & II							\$-
919	Annex III							\$-
921	Hilldale Annex							\$-
922	Annex IV	\$3,544.00	\$-	\$-	\$-	\$-	\$3,544.00	\$-
923	Enterprise Center	\$580.00	\$-	\$-	\$-	\$-	\$580.00	\$-
924	Professional Development Center	\$15,734.00	\$-	\$-	\$-	\$-	\$15,734.00	\$-
926	Little Rd. Annex	\$-	\$-	\$-	\$-	\$-	\$-	\$-
927	600 New York	\$4,140.00	\$-	\$-	\$-	\$-	\$4,140.00	\$-
934	Transportation							\$-
936	Food Service Aux. Warehouse	\$80.00	\$-	\$-	\$-	\$-	\$80.00	\$-
937	Food Services							\$-
950	District Wide	\$4,469,296.20	\$1,472,929.00	\$399,810.00	\$867,697.00	\$1,181,275.00	\$452,846.00	\$94,739.20
990	Other Locations	\$76,592.50	\$23,749.00	\$6,698.00	\$-	\$3,112.00	\$39,257.00	\$3,776.50
201	Data Centers	\$299,285.00	\$207,806.00	\$24,908.00	\$-	\$66,571.00	\$-	\$-
999	Admin Locations	\$1,633,435.00	\$480.00	\$-	\$-	\$3,547.00	\$1,629,408.00	\$-

TRANSPORTATION





TO: Cindy Powell
Chief Financial Officer

FROM: Tim Collins
Director of Transportation

DATE: October 24, 2019

Re: Updates-Bond Advisory Committee

Vehicle purchases for Year 5 of 2014 Bond Program are as follows:

- All 8 Regular Ed buses have been received and in service
- All 7 SPED buses have been received and in service
- Purchase and replacement of 25 Plant Services vehicles (White Fleet)
 - 23 of 25 services vehicles have been received. Twenty are in service and 3 will be in service next week.
 - Anticipate delivery of 2 remaining vehicles by January 2020

Other vehicles on order:

- 3 Suburbans for Transportation have been received and in service.
- 7 Yellow Shuttle Buses – expect deliver by end of October.

VW Grant Update:

AISSD was awarded the sum of **\$218,709.00** from the TCEQ – Volkswagen Grant funds to be utilized toward the purchase of 6 new School Buses. **5 buses** will receive a reimbursement amount of **\$42,136.00** each and **1 bus** will receive **\$8,029.00** toward its cost.

FACILITIES





TO: Cindy Powell
Chief Financial Officer

FROM: Tammy Craig
Director of Purchasing

DATE: September 17, 2019

RE: CSP 20-14 Bailey Junior High School Roof & Window Replacement Project

Competitive Sealed Proposal (CSP) **20-14** is for the construction services of the Bailey Junior School roof and window replacement project. Four proposals were received in response to the CSP. One vendor was marked not as specified, due to not receiving the required documentation. Attached is a recommendation letter from William Kelly Horn, Executive Director of Plant Services and a letter from LBL Architects.

It is recommended that the contract be awarded per the recommendation.

cc: Tony Drollinger
Executive Director of Finance



MEMORANDUM

TO: Tammy Craig, Director of Purchasing
FROM: Wm. Kelly Horn, Executive Director of Plant Service
DATE: September 10, 2019
SUBJECT: Competitive Sealed Proposal #20-14 for Bailey Junior High School Roof and Window Replacement Project

The District’s request for proposals was completed in accordance with all applicable laws and regulations and serves to identify the most qualified and competent contractor.

Proposals were received from four general contractors related to the Bailey Junior High School roof and window replacement project:

- Fast General Contracting, LLC
- Imperial Construction
- RJM Contractors, Inc.**
- Speed Fab-Crete Corp. (Not as Specified)

Proposals received from the proposers were evaluated based on the lowest priced, most qualified proposal. After review of the initial proposals, the District asked the qualifying proposers to submit a “Post Bid Addendum” bid breakout to determine alternate options available for keeping the project within the original budget.

After evaluation of proposals, the District’s Facilities Planning and Construction Department and the project architect, LBL Architects, recommends acceptance of the proposal from **RJM Contractors, Inc.**, for the Bailey Junior High School roof and window replacement project. This recommendation represents best value to the District.

Roof and window replacement services will be monitored and overseen by the District’s Facilities Planning and Construction Department. Funding for this project will be provided by the 2014 Bond Program construction budget.

September 10, 2019

Kelly Horn, Executive Director of Plant Services
1203 W. Pioneer Pkwy
Arlington, Texas 76013

RE: Arlington ISD
CSP No. 20-14
Bailey Junior High School New Roof & Window Replacement
Comm. No. 965A

Dear Kelly Horn,

Please accept our recommendation for award of a construction contract for the above referenced project. We have reviewed the proposal received on July 30, 2019 and the Bid Breakout received September 4, 2019. RJM Contractors, Inc. provided a Base Bid price of \$2,721,000 for the work identified. Additionally, they provided the required qualifications, proper forms, proposed time of completion, and HUB percentage. The budget for this project was \$2,800,000 and the Base Bid proposal is \$2,721,000, which is below budget by \$79,000. Based on the above information we therefore recommend a construction contract be awarded to RJM Contractors, Inc. in amount of \$2,721,000.

Please contact our office if you have any questions.

Sincerely,

A handwritten signature in black ink, appearing to read 'Tom McCarty', with a stylized flourish at the end.

Tom McCarty, AIA
Vice President
LBL Architects, Inc.



TO: Cindy Powell
Chief Financial Officer

FROM: Tammy Craig
Director of Purchasing

DATE: October 3, 2019

RE: **CSP 20-17 Wimbish World Languages Academy Canopy & Landscaping Project**

Competitive Sealed Proposal (CSP) **20-17** is for the construction services of the Wimbish World Languages Academy canopy and landscaping project. Two proposals were received in response to the CSP. Attached is a recommendation letter from William Kelly Horn, Executive Director of Plant Services, a letter from BRW Architects.

It is recommended that the contract be awarded per the recommendation.

cc: Tony Drollinger
Executive Director of Finance



MEMORANDUM

TO: Tammy Craig, Director of Purchasing
FROM: Wm. Kelly Horn, Executive Director of Plant Service
DATE: September 20, 2019
SUBJECT: Competitive Sealed Proposal #20-17 for Wimbish World Language Academy Canopy and Landscape Improvements Project

The District’s request for proposals was completed in accordance with all applicable laws and regulations and serves to identify the most qualified and competent contractor.

Proposals were received from two general contractors related to the Wimbish World Language Academy canopy and landscape improvements project:

Hutcherson Construction, Inc.
Imperial Construction

Proposals received from the proposers were evaluated based on the lowest priced, most qualified proposal.

After evaluation of proposals, the District’s Facilities Planning and Construction Department and the project architect, BRW Architects, recommends acceptance of the proposal from **Hutcherson Construction, Inc.**, for the Wimbish World Language Academy canopy and landscape improvements project. This recommendation represents best value to the District.

The canopy and landscape project will be monitored and overseen by the District’s Facilities Planning and Construction Department. Funding for this project will be provided by the 2014 Bond Program construction budget.



September 12, 2019

Mr. Wm. Kelly Horn
Executive Director of Plant Services
Arlington Independent School District
1201 Colorado Lane
Arlington, TX 76015

RE: CSP 20-17 FOR WIMBISH WORLD LANGUAGE ACADEMY CANOPY & LANDSCAPE IMPROVEMENTS PROJECT

Brown Reynolds Watford Architects has reviewed the Bid Proposal and Qualifications for the Wimbish World Language Academy Canopy and Landscape Improvements Project, dated September 10, 2019, provided by Hutcherson Construction, Inc. and reviewed with Arlington ISD. We believe the CSP base proposal amount of \$396,120.00 and \$25,000 Owner Contingency accurately reflects the scope of work documented in the Contract Documents dated August 16, 2019. The total proposal amount is \$421,120.00

Based on the proposal and qualifications, it is our recommendation that Arlington ISD approve the proposed CSP by Hutcherson Construction, Inc.

BROWN REYNOLDS WATFORD ARCHITECTS

LISA LAMKIN, FAIA, LEED AP BD+C
PRINCIPAL

Arlington Independent School District
Purchases Greater than \$50,000 Exempt from Bid
Date: October 3, 2019

Control No.	AISD Department	Vendor Name	Goods or Services	Estimated Amount	Purchase Method
20-10-03-001	Human Resources	Eduphoria! (V#10275035)	Software to manage all professional development sessions for teachers and staff	\$ 63,080.00	Single Source
20-10-03-002	Career & Technical	Multiple Vendors	Career & Technical Supplies & Materials (2nd year of 3-year contract)	\$ 250,000.00	Bid 19-27 Extension
20-10-03-003	Food & Nutrition Services	Cool Tech A/C Heat & Refrigeration (V#10281163)	Maintenance & Repair Services for Walk-In Coolers/Freezers (2nd year of 3-year contract)	\$ 160,000.00	RFP 19-25 Extension
20-10-03-004	Transportation	SC Fuels (V#10278034)	Diesel Fuel (2nd year of 3-year contract)	\$ 305,000.00	RFP 19-21 Extension
20-10-03-005	Human Resources	Symetra	Employer Paid Life Insurance	\$ 70,000.00	RFP 17-05 Extension
20-10-03-006	Plant Services	Hellas Construction (V#10277621)	Construction Services for the installation of field events areas for eight junior high schools	\$ 1,173,752.00	TASB Buyboard
20-10-03-007	State & Federal Programs	Houghton Mifflin Harcourt	Materials & Coaching for "Do the Math" program to provide optimal support for effective math intervention.	\$ 819,023.31	EPCNT